

FY 2022-2023 Higher Education Operating Budget Review

September 20, 2022

Matthew LaBruyere

Deputy Commissioner for Finance and
Administration

Elizabeth Bentley-Smith

Associate Commissioner for Finance and
Administration



Revenue Outlook and Statewide Overview

September 20, 2022

Jay Dardenne
Commissioner of Administration
Division of Administration

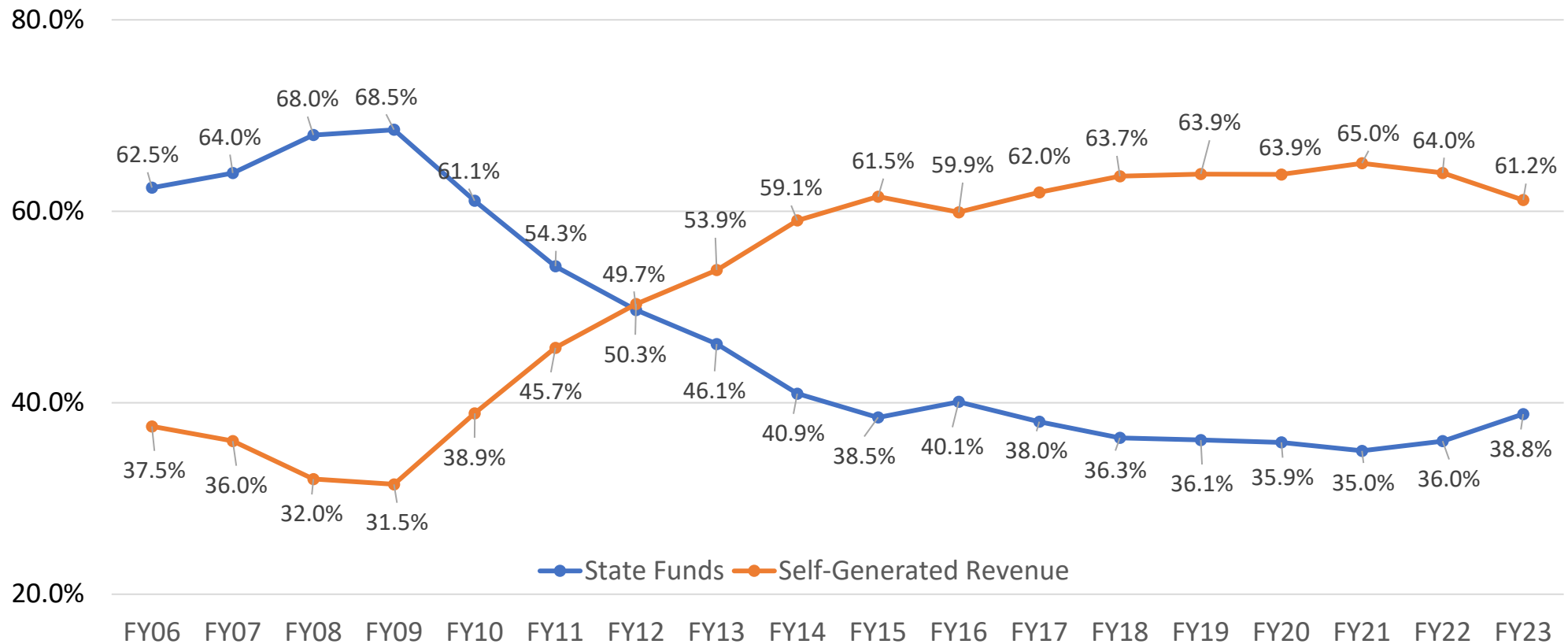
Deborah Vivien
Chief Economist
Legislative Fiscal Office





Higher Education Means of Finance

(Excludes Board of Regents LOSFA Program & Hospitals)

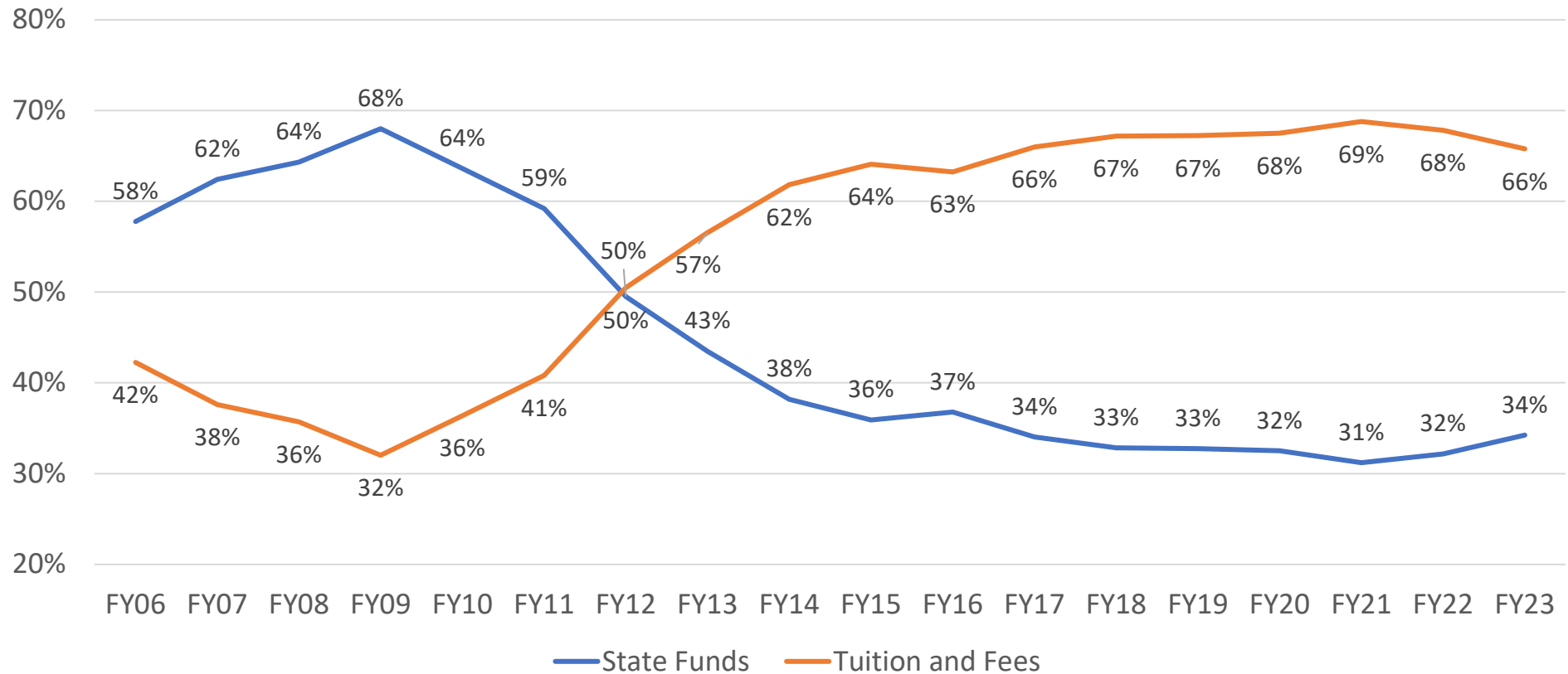




Higher Education Means of Finance

(Degree Granting Institutions Only)

Degree Granting Institution Funding Percentage





FY2022-2023

Higher Education Budget Overview

Beginning Operating Budget	FY 2021-2022	FY 2022-2023	Difference	% Change
State General Fund (SGF)	\$1,174,941,971	\$1,259,842,606	\$84,900,935	7.2%
Statutory Dedications	\$147,950,723	\$222,298,310	\$74,347,587	50.3%
Interagency Transfers (IAT)	\$22,967,410	\$23,119,071	\$151,661	0.7%
Self-Generated Revenue (SGR)	\$1,651,162,759	\$1,688,077,118	\$36,914,359	2.2%
Federal	\$73,795,283	\$79,628,616	\$5,833,333	7.9%
TOTAL	\$3,070,818,146	\$3,272,965,721	\$202,147,575	6.6%



FY2022-2023

Higher Education Budget Overview

State General Fund Highlights (\$84.9M)

- \$31.7M – Faculty Pay Increases
- \$23.5M – Specialized Increases
- \$18M – Mandated Costs Increases
- \$15M – GO Grant Increases
- \$15M – Formula Increases
- \$5M – Title IX Funding

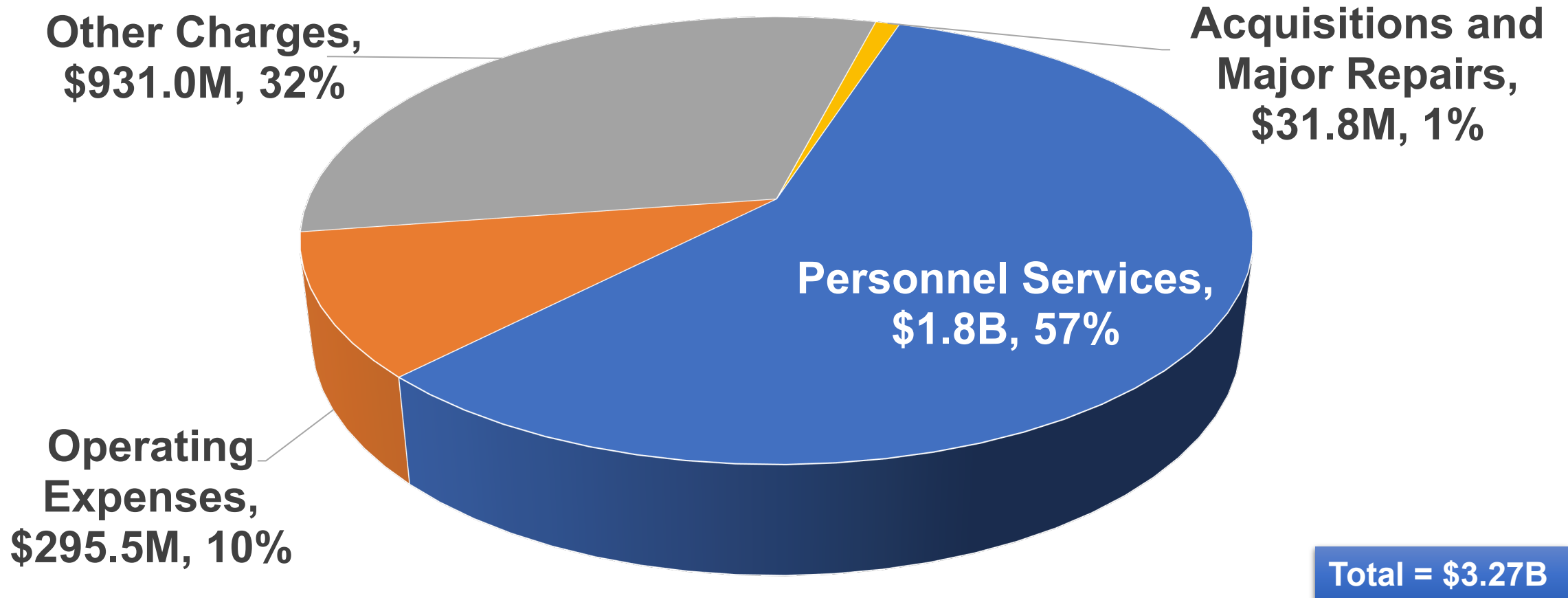
Statutory Dedication Highlights (\$74.3M)

- \$25M – Rapid Response for Healthcare
- \$20M – Reboot 2.0 and Broadband Training
- \$10.5M – Foster's Scholars
- \$5.4M – Accreditation and Innovation
- \$4.2M – HERO Fund



FY2022-23 Higher Education Budget Overview

Expenditures by Object





Higher Education Mandated Costs

Louisiana Higher Education: The True Picture

Higher Education Institutions (Excluding LOSFA and Hospitals)

Fiscal Year	Total State Funds	Self-Generated Funds	Federal Funds and Interagency Transfers	Total
FY 08-09	\$1,571,583,691	\$721,868,856	\$142,575,679	\$2,436,028,226
<i>FY 08-09 Mandated Costs Paid Back To The State</i>				<i>(\$445,116,071)</i>
<i>*FY 08-09 Scholarships and Fellowships</i>				<i>(\$100,913,609)</i>
<i>Dollars available for operations</i>				<i>\$1,889,998,546</i>
Fiscal Year	Total State Funds*	Self-Generated Funds	Federal Funds and Interagency Transfers	Total
FY 22-23	\$1,082,265,325	\$1,688,077,118	\$64,660,871	\$2,835,003,314
<i>FY 22-23 Mandated Costs Paid Back To The State</i>				<i>(\$718,654,823)</i>
<i>**FY 22-23 Scholarships and Fellowships</i>				<i>(\$299,247,387)</i>
<i>Dollars available for operations</i>				<i>\$1,817,101,104</i>
Change in 15 years: \$72.8M Less for operations				(\$72,897,442)

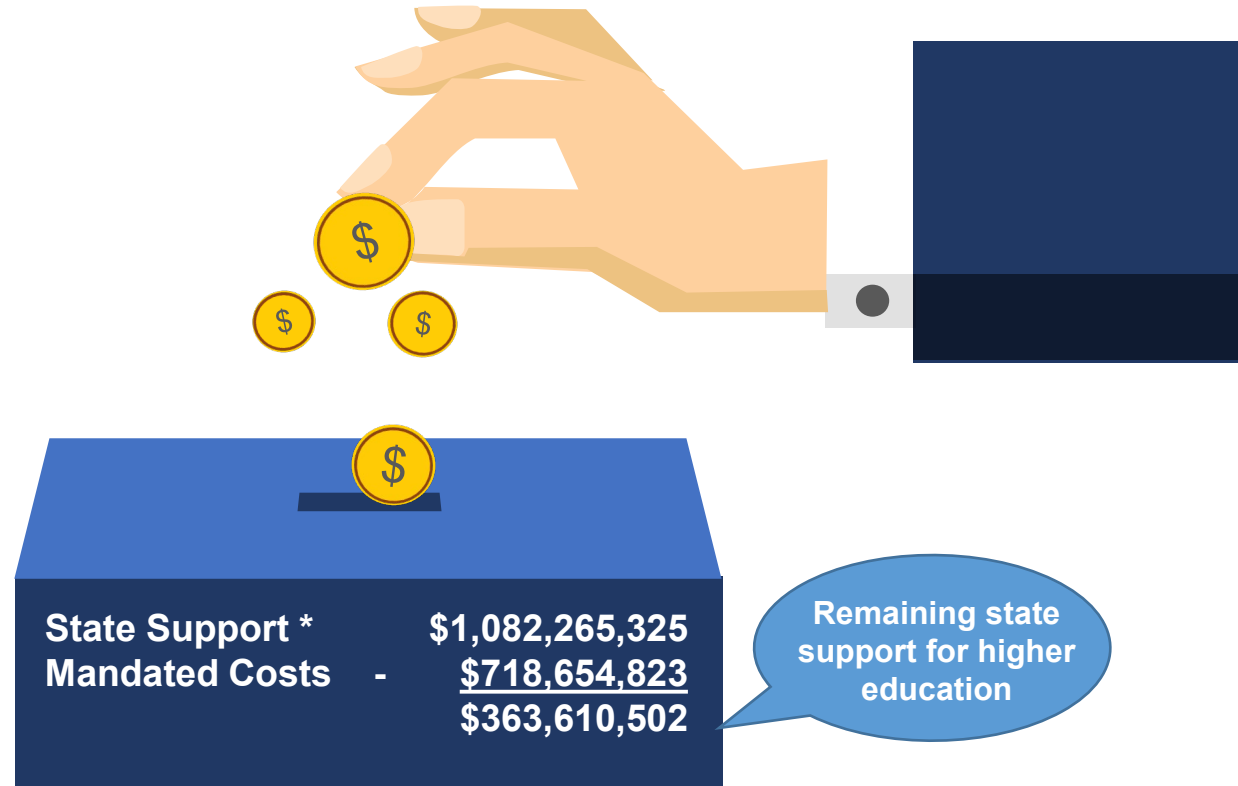
*State Funds includes State General Fund and Statutory Dedications.

**Institutions provide scholarships/fellowships to attract the best students and to abide by legislative mandates at the expense of not receiving all budgeted tuition/fees.

Note: Self generated funds include \$123 million of TOPS awards in FY 09 and \$330 million in FY 23.

Higher Education Mandated Costs

66¢ of every \$1 in state higher education funding goes back to the state for mandated costs



*State Funds = (State General Fund + Statutory Dedications)

FY 2022-2023 Board of Regents Budget Overview

September 20, 2022

Matthew LaBruyere

Deputy Commissioner for Finance and
Administration

Elizabeth Bentley-Smith

Associate Commissioner for Finance and
Administration



Act 314 of 2016

- Pursuant to Act 314 of 2016 and language contained in Act 17 of 2016, the Louisiana Office of Student Financial Assistance (LOSFA) and the Louisiana Universities Marine Consortium (LUMCON) are now a part of the Board of Regents (19-671).
- Instead of these entities being separate state agencies (LOSFA 19-661, LUMCON 19-674), these state agencies are now programs within the Board of Regents.
- The Board of Regents programmatic structure is as follows:
 - 19-671-1000, Board of Regents
 - 19-671-2000, LOSFA
 - 19-671-3000, LUMCON
 - 19-671-A000, LUMCON Auxiliary



Board of Regents (19-671)

(Budgeted amounts are includes LOSFA Program & LUMCON Program)

Means of Financing	Budgeted FY 2021-2022	Budgeted FY 2022-2023	Over/Under EOB
General Fund (Direct)	\$354,816,947	\$359,921,449	\$5,104,502
Statutory Dedications	\$86,039,444	\$113,075,266	\$27,035,822
Interagency Transfers	\$11,072,702	\$11,224,363	\$151,661
Fees and Self-generated Revenues	\$12,030,299	\$12,030,299	\$0
Federal Funds	\$54,622,799	\$62,956,132	\$8,333,333
TOTAL	\$518,582,191	\$559,207,509	\$40,625,318
Expenditures by Object	Budgeted FY 2021-2022	Budgeted FY 2022-2023	Over/Under EOB
Personal Services	\$26,444,010	\$28,758,137	\$2,314,127
Operating Expenses	\$14,160,750	\$16,818,939	\$2,658,189
Other Charges	\$476,887,559	\$513,204,233	\$36,316,674
Acquisitions and Major Repairs	\$1,089,872	\$426,200	(\$663,672)
TOTAL EXPENDITURES	\$518,582,191	\$559,207,509	\$40,625,318



Board of Regents (19-671)

Budget Overview

Significant Increases

- \$15M in SGF for GO Grants
- \$10.5M in Statutory Dedications for the M.J. Foster Promise Program
- \$5.4M in Higher Education Initiatives Fund
- \$4.25M in HERO Fund for healthcare needs
- \$1.0M in SGF increase for STEM Council
- \$324,000 in SGF increase for mandated cost increases

FY 2022-2023 Board of Regents Program Budget Overview

September 20, 2022

Matthew LaBruyere

Deputy Commissioner for Finance and
Administration

Elizabeth Bentley-Smith

Associate Commissioner for Finance and
Administration





Board of Regents (19-671-1000)

Budget Overview

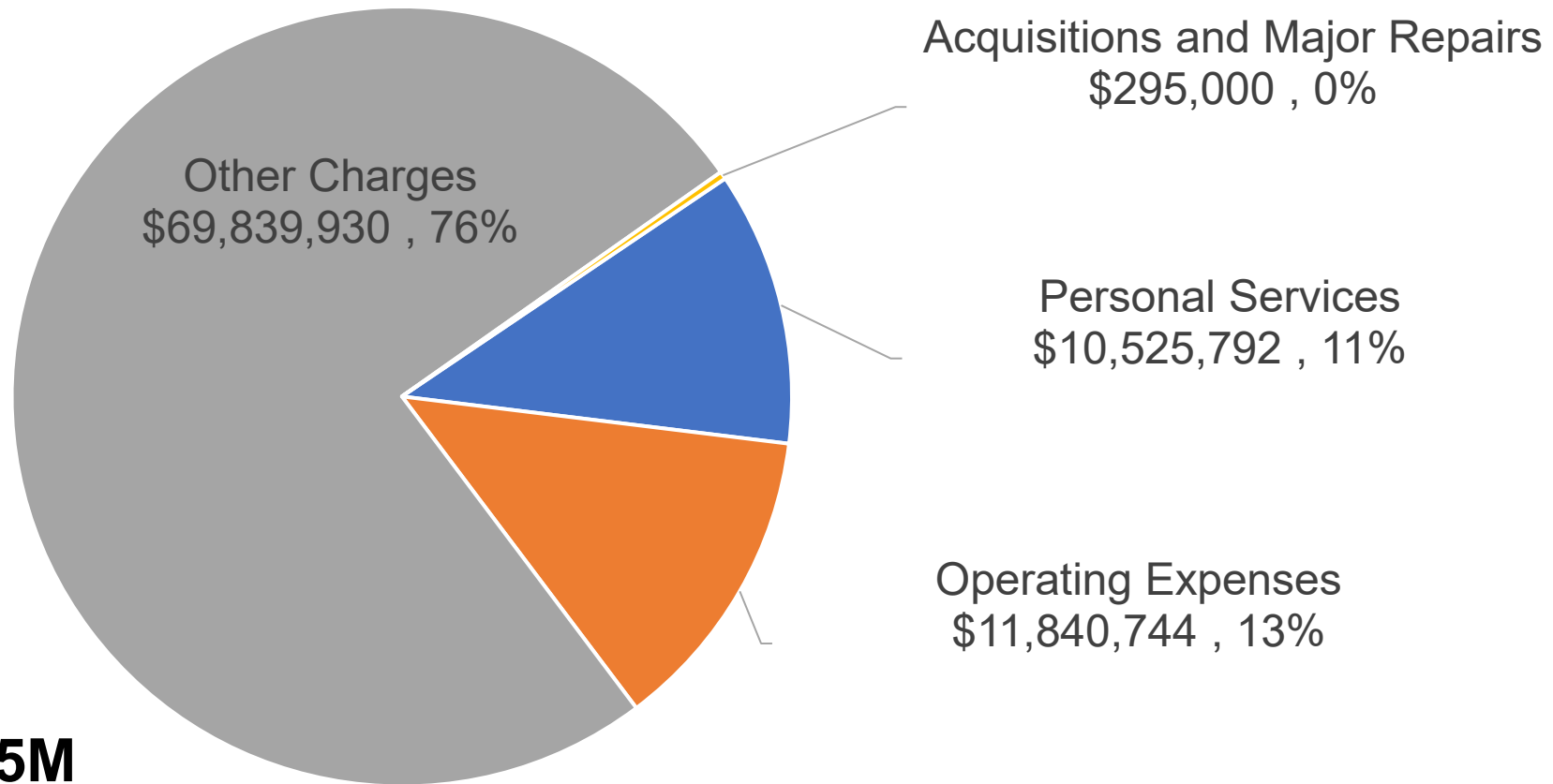
Means of Financing	Budgeted FY 2021-2022	Budgeted FY 2022-2023	Over/Under EOB
General Fund (Direct)	\$18,866,918	\$20,639,488	\$1,772,570
Statutory Dedications	\$27,540,000	\$37,247,667	\$9,707,667
Interagency Transfers	\$10,026,704	\$10,178,365	\$151,661
Fees and Self-generated Revenues	\$2,930,299	\$2,930,299	\$0
Federal Funds	\$13,172,314	\$21,505,647	\$8,333,333*
TOTAL	\$72,536,235	\$92,501,466	\$19,965,231

* Increase related to the Good Jobs Challenge federal grant that BOR was not awarded.



Board of Regents (19-671-1000)

Budget Overview



Total: \$92.5M



Board of Regents (19-671-1000)

Budget Overview

Significant Increases

- \$5.4M in Higher Ed Initiatives Fund for innovation and accreditation
- \$4.25M in HERO Fund for healthcare needs
- \$1.0M in SGF for STEM Council
- \$107,571 in SGF for mandated cost increases



Board of Regents (19-671-1000)

Budget Overview

Louisiana Optical Network Initiative (LONI)

FY22-23 State General Fund (SGF) budget – \$2.5M

- Board of Regents owned statewide fiber optics network, operated by LSU
- Consortium of 47 public, private, and research institutions
- Research universities and institutions utilize supercomputer Queen Bee 3

Louisiana Library Network (LOUIS)

FY 22-23 budget – \$8.8M (\$7.0M IAT + \$1.0M FED + \$0.8M SGR)

- Consortium of 48 public and private college and university libraries
- Saves members \$57M in FY23 and saved \$644M since its inception
- Since 2012, students saved \$8M in textbook costs and \$23M with Open Education Resources (OER)



LUMCON Budget Update

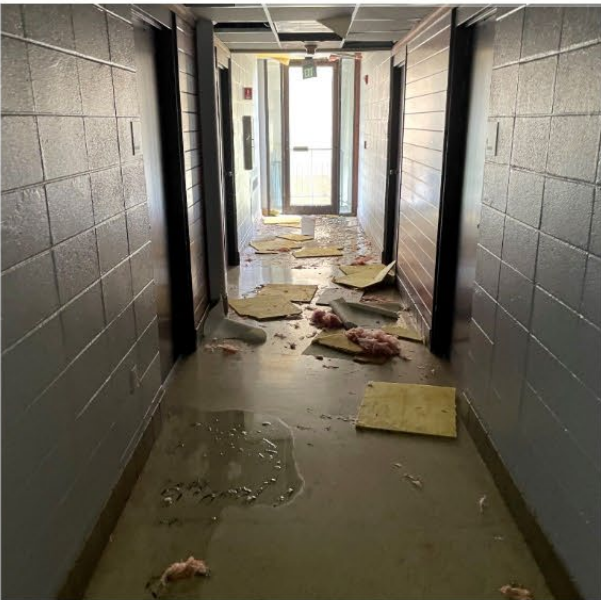
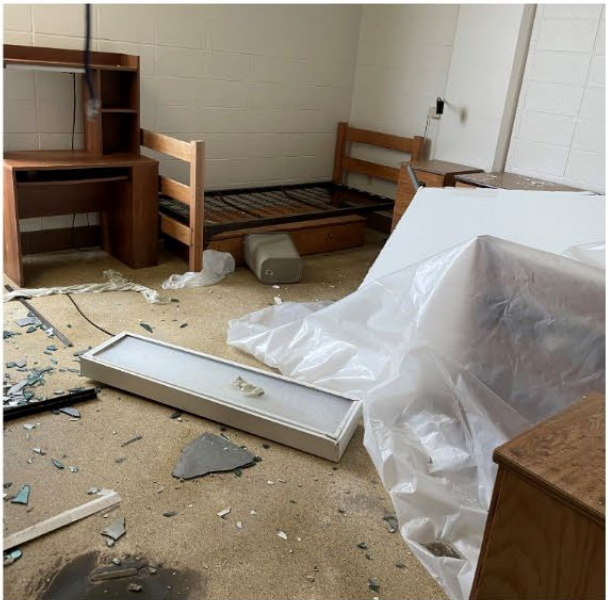
FY 2022 - 2023



Dr. Brian Roberts
Interim Executive Director



Hurricane Ida



Impacts of Hurricane Ida

(Note: Hurricane Ida occurred while still in COVID restrictions)

Education and Outreach

Year	E & O hosted people	Notes
2019	3,672	Last pre-pandemic year
2020	661	Pre-pandemic cancellations
2021	0	Only virtual events
2022 YTD	210 (Mar – Sep)	389 reservations for Oct-Dec and rising

Scientific Usage

Year	Total Person Days	Consortium Person Days
2019	903	732
2020	117	81
2021	672 (only 59 after Ida)	544
2022 YTD	330	326

Self-generated funds

Fiscal Year	Cafeteria, Residential Areas, Marine Education	Vessel Operations
2020	\$139,328	\$2,479,778
2021	\$12,943	\$3,265,942
2022	\$72,184	\$4,739,416

Impacts of Hurricane Ida

Vessels

R/V Pelican

Fiscal Year	Number of days	Notes
FY19	177	Last full year of operations for the R/V Pelican before the pandemic began.
FY20	109	Days at sea before March 2020 and after the NSF and LUMCON eased restrictions enough for R/V Pelican to operate with COVID protocols in place.
FY21	141	Days R/V Pelican operated with COVID restrictions and limitations still in place.
FY22	177	Compressed operations schedule due to Hurricane Ida.
FY23	168*	Already scheduled; number will go up significantly

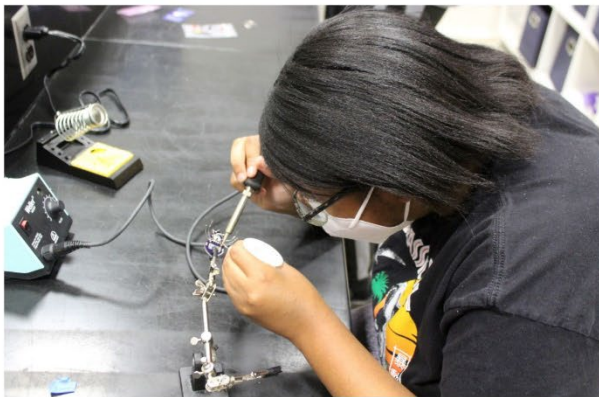
R/V Acadiana

Calendar Year	Total Revenue	Education Days	Research Days
2018	\$717,338	34	144
2019	\$215,780	47	38
2020	\$106,080	12	24
2021	\$300,410	16	57
2022 YTD	\$136,170	23	22

Small boats

Calendar Year	Total Revenue	Education Days	Research Days
2018	\$81,187	73	213
2019	\$88,313	51	232
2020	\$41,778	25	100
2021	\$155,772	5	183
2022 YTD	\$139,319	10	136

Productive Summer 2022



Current Grant Status

Three main categories:

- 1) LUMCON (mostly generated by research faculty with some E&O)
- 2) Vessel operations
- 3) BTNEP

Current status of LUMCON, Vessel operations, and BTNEP grants as of September 1, 2022

	LUMCON	Vessel operations	BTNEP
Life of grant total	\$6,443,796	\$7,789,669	\$5,553,679
Remaining funds	\$3,205,787	\$3,605,212	\$3,110,269
Direct Cost Balance	\$2,584,929	\$3,456,991	\$2,772,553
Indirect Cost Balance	\$620,858	\$148,221	\$337,716

2022: Faculty have been awarded 12 grants (6 from NSF) totaling > \$5.4M with LUMCON receiving > \$2.8M

BTNEP: National Estuary Program Bipartisan Infrastructure Law Funding = \$900K per year for next 5 years

LUMCON's Current Deferred Maintenance Requirements

\$3M allocated for LUMCON in deferred maintenance (includes essential roof replacement)

Highest priority projects for remaining ~\$1M (far exceed this amount):

- Septic tank replacement (\$75K)
- Upstairs wet lab repairs (\$100K)
- Generator control system (\$80K)
- HVAC system upgrades (\$1.7M)—can be broken down into phases (both A/C chillers, 3 air handler units, fan coil blower units in dormitories, and piping)
- Apartment and dormitory renovations (\$250K)

Future deferred maintenance projects:

- Collections room renovation / conversion into lab space (\$250K)
- Elevator replacement (\$300K)
- Facility signage Bulkhead/dock replacement (\$1.9M)
- Lobby aquarium and observation tower repairs and renovations (\$2.5M)

RCRV Gilbert R. Mason update



Third and final boat out of the shipyard

Late 2024

RV Pelican replacement update

125 ft x 34 ft x 14 ft



Design:

- \$1M for design awarded to JMS in mid-2021
- Design complete September 30th

Construction:

- \$10,890,000 in FY23 capital outlay to begin construction
- Up to \$31,000,000 in priority 5 to be expended in FY24 and FY25

Anticipated completion : 2025





Houma Maritime Campus



1) Blueworks Facility

- Completion early 2023

2) Boat slip and bulkheading

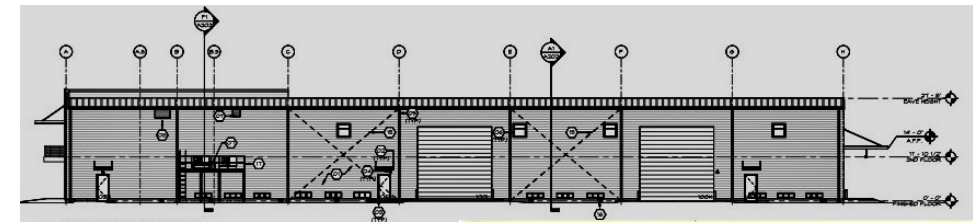
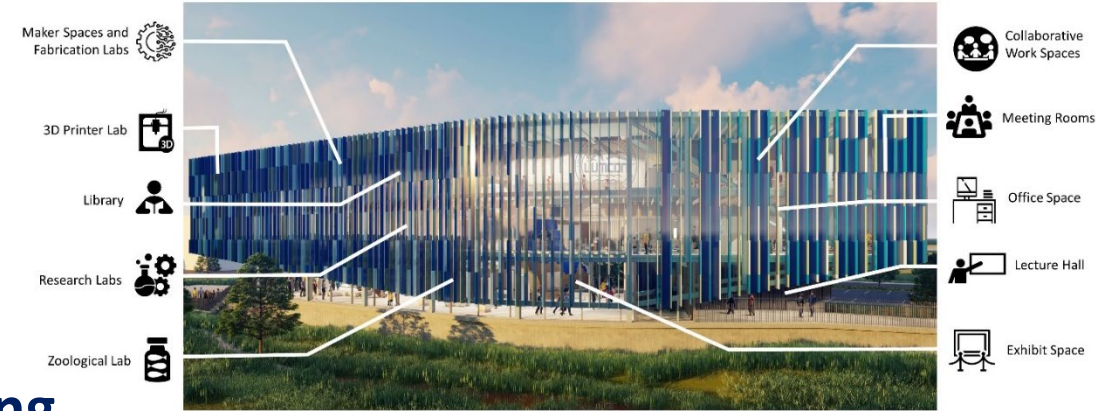
- Bid to go out soon.
- Completion November 2023

3) Marine Operations Center

- Site surcharge has begun.
- Construction begins once compaction is complete.
- Completion anticipated March 2024.

4) Extended Bulkheading

- Completion ?







Photos taken 2022.09.15

FY 24 Critical Funding Needs

Houma Maritime Campus:

- Blue Works scheduled to be completed in the first half of 2023
- Current FY23 budget does not include any increase in funding beyond the levels received in FY22
- FY24 budget needs to include funding to cover the cost of operating the facility (utilities, IT (none of the equipment, wiring, services are included in FF&E for the building), maintenance contracts, landscaping, security, custodial, etc.).

Staffing Needs:

- HMC: 2nd faculty member, Receptionist/Assistant, BW Educators (Senior and preferably a Junior level), and positions shared with Fletcher (security, custodial, groundskeeping)
- Facilities and Maintenance staff: needs to increase from 2 to 4 (already short at MC)
- MC: Open faculty position, Grants Administrator, Deputy Director / COO, Consortium Coordinator, Educators

Operation Expenses:

- HMC: Operations of Blueworks needs to be included in FY24 Budget
- MC: Operating costs of MC have increased significantly and anticipated to increase as building/equipment age
- Insurance: FY23 incureased ~\$122K (40%) over FY22, before factor in HMC (BW all and MOC in late FY24)
- BTNEP: Need to meet state portion of EPA Federal Match (\$700K in FY22, \$750K in FY23, \$800K in FY24)



Questions?



LOSFA

LOUISIANA OFFICE OF STUDENT FINANCIAL ASSISTANCE

— A PROGRAM OF THE BOARD OF REGENTS —

FY 2022-23 OPERATING BUDGET REVIEW

Sujuan Boutté
Executive Director

AGENDA FOR **TODAY'S PRESENTATION**

01 FY 2022-23 Appropriation/Revenue

02 GO Grant

03 MJ Foster and GeauxTeach

04 TOPS

05 Gear Up and Outreach



LOSFA

LOUISIANA OFFICE OF STUDENT FINANCIAL ASSISTANCE

— A PROGRAM OF THE BOARD OF REGENTS —

ABOUT LOSFA

The Louisiana Office of Student Financial Assistance (LOSFA) is a Program of the Louisiana Board of Regents, that strives to be Louisiana's first choice for college access by promoting, preparing for and providing equity of college access. LOSFA administers the state's scholarship and grant programs and the state's Internal Revenue Code Section 529 college savings program.



BOARD *of* REGENTS
STATE OF LOUISIANA

FY 2022-23 APPROPRIATION/REVENUE

TOTAL: \$448,987,511

IAT
\$670,998

SGF
\$335,110,269

SD
\$75,790,426

FED
\$37,415,818

**Program Awards
89.2%
\$401,654,834**

- \$123,245 - FED :
 - JR Justice
 - Paul Douglas Program
- \$670,998 - IAT:
 - Chafee
 - STEP-TANF
- \$75,515,426 - SD:
 - TOPS
 - Rockefeller
 - Geaux Teach
 - MJ Foster Promise
 - GO Youth ChalleNGe
- \$324,345,165 - SGF:
 - TOPS
 - Go Grant
 - RCP
 - START Earning Enhancements

**FFEL Program
7.5%
\$33,792,573**

(Federal Fund: Property of USDOE)

- \$33,792,573- FED:
 - FFELP Contracts
 - FFELP Claims
 - FFELP Administration

**FFEL PROGRAM IS CURRENTLY
ENDING IN FY 2022-23**

**THIS FUNDING WILL NOT BE
AVAILABLE FOR FY 2023-24**

**GEAR UP/LFOS
1.2%
\$5,450,150**

(Funds have specific grant requirements,
including \$1 for \$1 Match*)

- \$3,500,000 - FED:
 - Louisiana GEAR UP Program
- \$1,950,150 - SGF:
 - LFOS (LOSFA Field Outreach Services)
 - *LOSFA/BOR Must Provide Match
 - Grant Partners Must Provide Match

**GEAR UP IS CURRENTLY IN THE FINAL
FUNDING YEAR. FEDERAL FUNDING (3.5M)
WILL NOT BE AVAILABLE FOR FY 2023-24.**

**Program Operations
2.1%
\$9,339,954**

- \$8,814,954 - SGF:
 - Administration of
 - TOPS
 - GO
 - START, ABLE, START K12
 - JR Justice
 - Chafee
 - STEP-TANF
 - Rockefeller
 - GO Youth ChalleNGe
 - Etc.
 - Operating Expenses
 - Personnel
 - Rent
 - Travel
 - Supplies
 - Computers
 - Telephones
 - Etc.
- \$525,000 - SD:
 - Administration of MJ Foster Promise

MAJOR CHANGES OVER THE LAST 10 YEARS

FY 2012-13 TO FY 2022-23*

Programs Administered

175% Increase

<u>FY 2012-13</u>	<u>FY 2022-23</u>
TOPS (OPH & T)	TOPS (OPH & T)
TTES	TTES
GO Grant	GO Grant
Rockefeller	Rockefeller
Chafee	Chafee
JR Justice	JR Justice
START (529)	START (529)
CACG	START K-12 (529)
PIC	ABLE (529)
	GO Youth ChalleNGe
	BESE Tuition Program for Teachers
	Paul Douglas
	RCP
	STEP-TANF
	MJ Foster
	Completers Grant
	LCTCS Pilot 1
	LCTCS Pilot 2
	GEAUX Teach
	GEAR UP
	CASC
	SE-Network Groups
	LFOs

Budget

80.4% Increase

<u>FY 2012-13</u>	<u>FY 2022-23</u>
\$248,747,396	\$448,987,511

Outreach Audiences

500% Increase

<u>FY 2012-13</u>	<u>FY 2022-23</u>
Secondary (K-12)	Secondary (K-12)
Program awardees	Program awardees
College savings participants	College savings participants
	Post-secondary
	Nontraditional students
	Adult learners
	Incarcerated individuals
	Aged out foster youth
	Teachers
	Non-credit learners
	TANF recipients
	NG Youth Challenge Students
	K12 Savings Participants
	Disabled Individuals
	Returning Students
	Near Completers
	Teacher Preparation Students
	Alt. Cert. Teacher Students

Operations

21.0% Increase

<u>FY 2012-13</u>	<u>FY 2022-23</u>
\$7,717,866	\$9,339,954

Personnel

23.7% Increase

<u>FY 2012-13</u>	<u>FY 2022-23</u>
76	94

TAKEAWAYS

- 175% increase in programs administered.
- 80.4% increase in budget (\$199,757,479 of the \$200,210,115 increase was for program awards-TOPS, GO, MJ Foster, EEs).
- 21% and 23.7% increase in operations and personnel was GEAR UP grant moving to LOSFA.
- 500% increase in outreach audiences.

* LOSFA's budget moved into HIED in FY 2010-11.

Note: For more information and prior year statistics on LOSFA Programs see slides 24 and 25.

GO GRANTS RECEIVED AN ADDITIONAL \$15M IN FUNDING IN FY23, FOR A TOTAL AMOUNT OF \$55.4M

How have those funds been allocated?

School	2022-2023 Allocation
LSU-A	\$ 614,644
LSU-BR	\$ 4,470,639
LSU-E	\$ 536,693
LSU-S	\$ 1,897,356
LSUMC-NO	\$ 395,205
LSUMC-S	\$ 12,335
LSU SYSTEM SUB-TOTAL	\$ 7,926,872
Southern-BR	\$ 2,548,001
Southern-NO	\$ 564,967
Southern-S	\$ 439,902
SU SYSTEM SUB-TOTAL	\$ 3,552,870
Grambling	\$ 1,859,120
La. Tech	\$ 2,294,732
McNeese	\$ 3,076,859
Nicholls	\$ 2,228,226
Northwestern	\$ 3,215,378
Southeastern	\$ 6,016,110
ULL	\$ 4,916,525
ULM	\$ 3,378,196
UNO	\$ 2,393,929
UL SYSTEM SUB-TOTAL	\$ 29,379,075

School	2022-2023 Allocation
Baton Rouge CC	\$ 1,234,086
Bossier Parish CC	\$ 524,969
Central Louisiana Tech CC	\$ 132,464
Delgado CC	\$ 5,244,400
Fletcher Tech CC	\$ 215,543
Louisiana Delta CC	\$ 547,883
Northshore Tech CC	\$ 90,314
Northwest Louisiana Tech CC	\$ 168,282
Nunez CC	\$ 174,745
River Parishes CC	\$ 162,634
South La. CC	\$ 910,309
Sowela Tech CC	\$ 489,332
LCTC SYSTEM SUB-TOTAL	\$ 9,894,961
Centenary	\$ 95,657
Dillard	\$ 621,714
La College	\$ 487,153
Loyola	\$ 621,011
Univ. of Holy Cross	\$ 126,981
Franciscan Missionaries of Our Lady	\$ 712,288
Tulane	\$ 687,453
Xavier	\$ 1,374,681
LAICU SYSTEM SUB-TOTAL	\$ 4,726,938

Total \$ **55,480,716**

Each school received a 37% increase in its FY 2022-23 allocation.

- Allocation of Funds: (Prior FY Allocation Expended/prior FY appropriation) *times* total appropriated for current FY
- Reallocation of Funds: Funds not used by the deadline are swept and redistributed to schools that have committed all funds and have additional students with need.
- Allocations for subsequent year are adjusted accordingly.

Data as of 9-1-22

WHAT CAN YOU TELL US ABOUT THE IMPACT OF THIS INCREASE?



GO GRANT

	2020-21			2021-22				2022-23
	Students Awarded	Dollars Spent	Average Award	Students Awarded	Dollars Spent	Average Award	Annual Allocation	Annual Allocation
LAICU	1,225	\$2,505,835	\$2,045.58	1,695	\$3,449,202	\$2,034.93	\$3,449,202	\$4,726,938
LCTCS	7,488	\$5,204,310	\$695.02	9,394	\$7,212,497	\$767.78	\$7,220,247	\$9,894,961
LSU System	3,359	\$4,146,653	\$1,234.49	4,249	\$5,782,908	\$1,361.00	\$5,782,908	\$7,926,872
SU System	1,019	\$1,888,318	\$1,853.11	1,494	\$2,554,992	\$1,710.17	\$2,592,492	\$3,552,870
UL System	11,787	\$15,597,842	\$1,323.31	15,270	\$21,412,616	\$1,402.27	\$21,435,867	\$29,379,075
TOTAL	24,878	\$29,342,958	\$1,179.47	32,102	\$40,412,215	\$1,258.87	\$40,480,716	\$55,480,716
Change from 20-21 to 21-22				29.04%	37.72%	6.73%		

Data as of 9-6-22

Increase
Decrease

- Postsecondary institutions distribute GO Grant dollars based upon a packaging policy developed in accordance with Administrative Rules.
- Each institution shall determine the award amounts for eligible students at that institution based on the guidelines of minimum award of \$300 and maximum award of \$3,000.
- Some schools have chosen to increase grant amounts in order to more robustly assist students while others have chosen to decrease grant amounts to serve more students.
- Increases in the amount of each grant generally result in a decrease of number of students served and vice versa.

HOW MANY STUDENTS RECEIVE GO GRANTS AND WHAT IS THE AVERAGE AWARD?

GO Grant Payment Summary AY 2021-22

	Students	Dollars	Average Award
LSU System	4,249	\$5,782,908	\$1,361.00
Southern System	1,494	\$2,554,992	\$1,710.17
University of La System	15,270	\$21,412,616	\$1,402.27
LCTC System	9,394	\$7,212,497	\$767.78
LAICU System	1,695	\$3,449,202	\$2,034.93
TOTAL	32,102	\$40,412,215	\$1,258.87

* Duplicate count – students may be counted at multiple institutions

Source: LOSFA Award System
Data as of 9-6-22

Unduplicated Count of GO Grant Students AY 2021-22
29,871

AWARD AMOUNTS**

Award amounts to eligible students are based on the institution's allocation and its packaging policy. Awards may vary with each academic year. Awards will not be paid for summer sessions, quarters or terms.

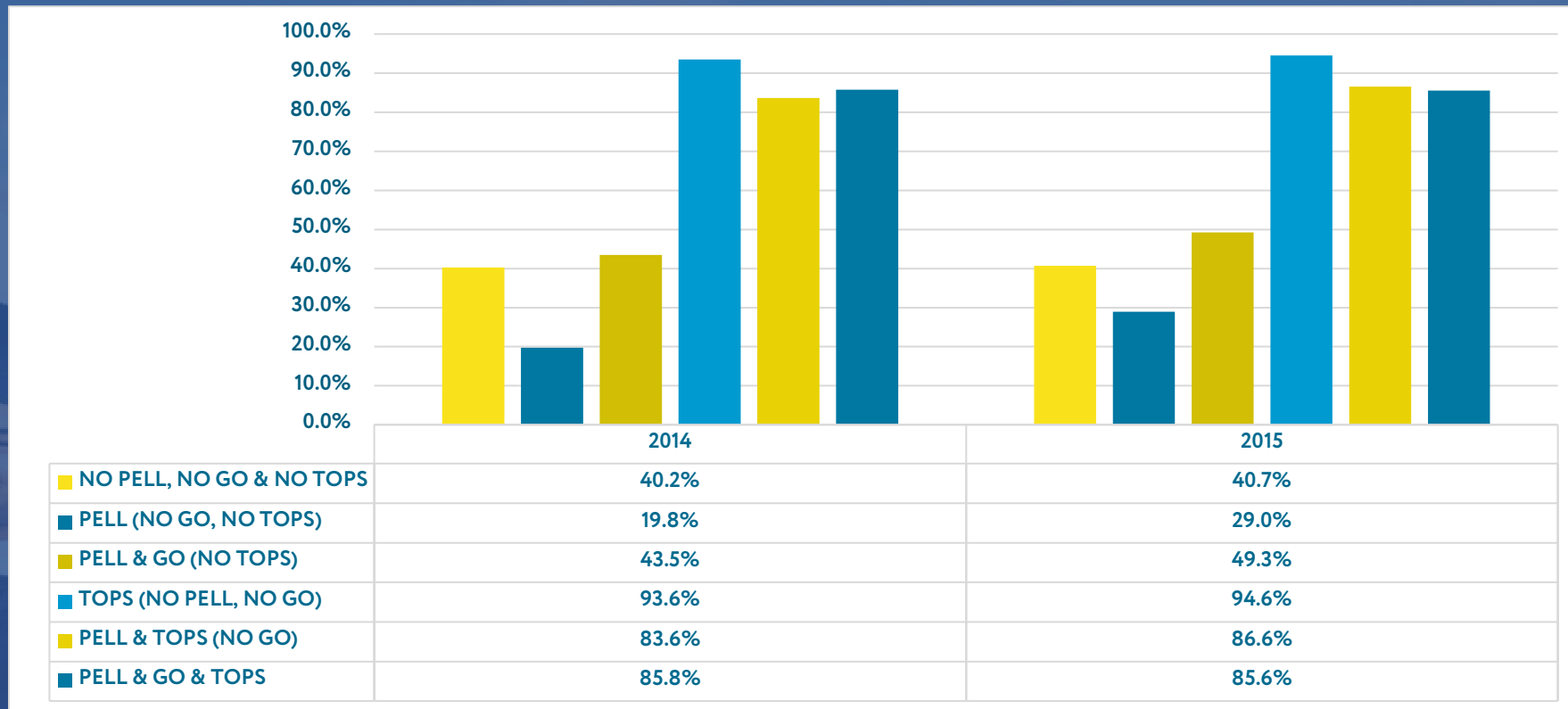
Maximum and minimum annual award amounts for the current Academic Year:

Minimum Annual Award: \$300
Maximum Annual Award: \$3,000

** Students should check with the financial aid office at the school they plan to attend regarding policy on the award calculation and distribution.

WHAT IS THE STUDENT COMPLETION RATE?

Bachelor's Graduation Rate Within 150% Timeframe



Cohort includes: Louisiana Resident, First-time in College or Transfer Students, Full-time for Given Year.

Source: LOSFA Payment Files & BOR SSPS and Completers Files as of 9/12/21.

Note: BOR methodology change to the cohort – previous cohort data included students pursuing credentials less than an associates' degree

WHAT IS THE OPTIMUM AMOUNT NEEDED FOR FULL FUNDING OF GO GRANTS?

	Number of Students Eligible - Sept. 2022 Survey	Number of Students Awarded - 2021-22 Actuals	% of GO Eligible Students that receive award
LSU SYSTEM	8,761	4,249	48%
SU SYSTEM	6,187	1,494	24%
UL SYSTEM	22,392	15,270	68%
LCTC SYSTEM	21,231	9,394	44%
LAICU	2,910	1,695	58%
TOTALS	61,481	32,102	52%

Source: Number of Students Awarded 2021-22 Actuals data from LOSFA Award System 9-6-22.
 Number of Students Eligible from September 2022 Survey of Institutions (Prior year data used for schools that did not respond: LSU-E, SUBR, LaTech, ULL, BRCC, BPCC, LCDD, SLCC, Sowela TCC, and Dillard).

***ESTIMATED AMOUNT TO FUND ALL ELIGIBLE STUDENTS AT PACKAGING POLICY AMOUNT:**
\$125,160,388
 from September 2022 Survey of Institutions

****ESTIMATED AMOUNT TO FUND ALL ELIGIBLE STUDENTS AT MAXIMUM AWARD AMOUNT (\$3,000):**
\$182,960,000
 from September 2022 Survey of Institutions

GO GRANT FUNDING FY 2022-23

State General Fund: \$55,480,716

***FY 2022-23 Funding would serve approximately 44.3% of GO Eligible Students at Packaging Policy Amount**

****FY 2022-23 Funding would serve approximately 30.3% of GO Eligible Students at Maximum Award Amount (\$3,000 annually)**

M.J. FOSTER PROMISE PROGRAM

5,219

TOTAL APPLICANTS

3,610
ELIGIBLE

1,603
INELIGIBLE

6
WITHDRAWN

REASONS FOR INELIGIBILITY

As of September 19, 2022, the top six reasons for ineligibility for public two-year and proprietary schools are as follows:

- **365** exceed education level requirements.
- **262** no FAFSA found.
- **250** do not meet the age requirement.
- **211** exceed poverty level requirements.
- **70** no FAFSA found and exceed education limit requirements
- **62** FAFSA not signed

The remaining total ineligible applicants fall under the following error codes or some combination of error codes:

- Applicant does not meet the high school graduation or co-enrollment requirement
- FAFSA is not signed
- Applicant has a violent crime conviction
- Applicant is incarcerated
- Residency data conflict between FAFSA and online application
- Or some combination of above errors

WAITLISTED

As of September 19, 2022, **2,783** applicants were funded and **827** were eligible, but waitlisted.

EMPLOYMENT STATUS

Total Applicants: 69% Employed, 31% Unemployed
Ineligible Applicants: 72% Employed, 28% Unemployed
Eligible Applicants: 68% Employed, 32% Unemployed

PUBLIC 2-YEAR (LCTCS, LSUE, SUSLA)

3,124
ELIGIBLE

2,705
FUNDED

419
WAITLIST

PROPRIETARY

486
ELIGIBLE

78
FUNDED

408
WAITLIST

Data as of 9-19-22

M.J. FOSTER PROMISE PROGRAM

MJ Foster Payment Requests as of Monday, September 19, 2023

Institution Type	Institution Name	Average Request from Institution
Proprietary	ACADEMY OF INTERACTIVE ENTERTAINMENT	\$688
Proprietary	ITI TECHNICAL COLLEGE	\$1,600
Proprietary	DELTA COLLEGE OF ARTS AND TECH-COV	\$1600
Two-year, Public	RPCC - MAIN	\$1,975
Two-year, Public	SLCC - MAIN CAMPUS	\$5,125
Two-year, Public	SOWELA TECH CC	\$4,009

Two-year, Public	Payment Requests	Number of Students Paid
RPCC	\$1,975	1
SLCC	\$15,375	3
SOWELA TECH CC	\$12,027	3
Total	\$29,377	7

Proprietary	Payment Request	Number of Students Paid
ACADEMY OF INTERACTIVE ENTERTAINMENT	\$2,753	4
ITI TECHNICAL COLLEGE	\$1600	1
DELTA COLLEGE OF ARTS AND TECH-COV	\$1600	1
Total	\$5,953	6

Total Number of Students Paid: 13

Total MJ Foster Promise Program Payment Requests: \$35,330

Student Status as Reported by Participating MJ Foster Promise schools:

Enrolled at LCTCS: 263 funded students. Of those, 17 are freshmen, 47 are transfer, 75 are returning and 124 are continuing.

Enrolled at LSU-E - 5 funded students.

No data reported from proprietary or SUSLA.

GEAUX TEACH FUND



ABOUT GEAUX TEACH

The Geaux Teach scholarship program was established to provide scholarships to students who are enrolled in teacher preparation programs approved by the Board of Elementary and Secondary Education (BESE) at postsecondary education institutions within the state.

ELIGIBILITY REQUIREMENTS

1. The student must be a United States citizen and if required, registered with the Selective Service.
2. Be a Louisiana resident for at least two years prior to July 1 immediately preceding the academic year of enrollment.
3. Have at least a 2.50 cumulative college grade point average.
4. Be enrolled full time in an approved teacher preparation program.

QUALIFIED EXPENSES

Scholarship awards shall be applicable only to the **cost of tuition, required fees, and textbooks and instructional materials** required for the course of study.

The award shall be used only after all other state or institutional financial aid and awards are applied and only for any remaining balance due for tuition, required fees, and textbooks and instructional materials required for the course of study.

PARTICIPATING SCHOOLS

LSU SYSTEM

Louisiana State University-Baton Rouge
Louisiana State University-Alexandria
Louisiana State University-Shreveport

SU SYSTEM

Southern University-Baton Rouge
Southern University-New Orleans

UL SYSTEM

Nicholls State University
Grambling State University
Louisiana Tech University
McNeese State University
University of Louisiana Monroe
Northwestern State University
Southeastern Louisiana University
University of Louisiana at Lafayette
University of New Orleans

INDEPENDENT SCHOOLS

Centenary College of Louisiana
La Christian University
Loyola University New Orleans
Tulane University
University of Holy Cross
Xavier University of Louisiana

ALTERNATIVE CERTIFICATION PROGRAMS

Caddo Teaching Academy (CTA)
iteachLOUISIANA
Jefferson Parish EMBARK Aspiring Educators
Louisiana Resource Center for Educators (LRCE)
Teach Ascension Academy (TAA)
Teach St. Bernard (TeachSB)
Teach St. Tammany
Teach Tangi
The New Teacher Project (TNTP Academy)

FACTORS CONTRIBUTING TO STATIC TOPS PROJECTIONS FOR FY 23

Decrease in HS Graduates Processed, Decrease in TOPS Eligibles and Decrease in Acceptance Rate

HS Grad Year	Graduates Processed	TOPS Eligible Students	% Eligible	Increase/Decrease in % Eligible	TOPS Recipients	Acceptance Rate	Increase/Decrease in Acceptance Rate
2015-16	36,472	24,634	67.50%		17,745	72.00%	
2016-17	36,644	25,573	69.80%	3.41%	18,065	70.60%	-1.94%
2017-18	43,955	27,609	62.80%	-10.03%	19,399	70.30%	-0.42%
2018-19	42,582	28,100	66.00%	5.10%	18,865	67.10%	-4.55%
2019-20	39,230	26,248	66.90%	1.36%	17,399	66.30%	-1.19%
2020-21	37,519	24,653	65.70%	-1.79%	15,094	61.20%	-7.69%
2021-22	36,678	23,588	64.18%	-1.52%	*1,184	5.02%	-56.18%

*School cannot bill until after the census date (14th class day).

Data as of 9-12-22

Increase in Exceptions - COVID, Hurricanes, EEO

	FY 2020-21
EXCEPTIONS RECEIVED	1,035
EXCEPTIONS APPROVED	799

	FY 2021-22
EXCEPTIONS RECEIVED	1,336
EXCEPTIONS APPROVED	952

Hurricane Exceptions	
Laura/Delta/Zeta - 2020	41,405
Ida - 2021	30,177

Types of Exceptions	FY 2020-21	FY 2021-22
Parental Leave	25	37
Rehab Program	5	13
Temp/Perm Disability	239	297
Exceptional Educ Opp	69	177
Religious Commitment	2	1
Death of family member	22	54
Military Service	45	70
Selective Enrollment	73	81
Unavail. Courses	3	15
Natural Disaster	-	4
Exceptional Circum	56	37
COVID Exceptions	260	166

- 85% of college students report increased stress and anxiety due to COVID
- 80% reported COVID had negative effect on mental health
- 85% had difficulty focusing on school and work

Source: Insider Higher Ed: <https://timely.md/blog/what-college-students-really-think-about-virtual-healthcare/>

WHAT ARE THE CURRENT TOPS PROJECTIONS IN THE ENSUING FISCAL YEARS?

Taylor Opportunity Program for Students (TOPS)

Academic Year Award Projection

Data as of 08/30/2022

TOPS Component	2022-2023 Academic Year Projected		2023-2024 Academic Year Projected		2024-2025 Academic Year Projected		2025-2026 Academic Year Projected		2026-2027 Academic Year Projected	
	#	\$	#	\$	#	\$	#	\$	#	\$
Honors	13,027	90,013,896	13,327	92,084,216	13,633	94,202,153	13,974	96,557,206	14,239	98,391,793
Performance	14,919	90,322,283	15,262	92,399,696	15,613	94,524,889	16,003	96,888,011	16,308	98,728,883
Opportunity	26,615	143,535,655	27,227	146,836,975	27,853	150,214,225	28,550	153,969,581	29,092	156,895,003
Tech	2,275	6,065,521	2,327	6,205,028	2,381	6,347,744	2,440	6,506,437	2,487	6,630,060
Nat'l Guard	149	71,326	152	72,966	156	74,645	160	76,511	163	77,965
SUB-TOTAL	56,985	330,008,681	58,296	337,598,881	59,636	345,363,655	61,127	353,997,746	62,289	360,723,703
% Increase *		2.9%		2.3%		2.3%		2.5%		1.9%
Avg Annual TOPS Awd *		5,791		5,791		5,791		5,791		5,791
Tech Early Start	3,877	926,194	4,093	947,496	4,187	969,289	4,292	993,521	4,373	1,012,398
TOTAL	60,862	330,934,875	62,388	338,546,377	63,823	346,332,944	65,419	354,991,267	66,662	361,736,101

*Includes Opportunity, Performance, Honors and Tech. Excludes TOPS Tech Early Start

HOW MANY STUDENTS RECEIVE TOPS AND TOPS TECH? WHAT IS THE AVERAGE AMOUNT FOR EACH AWARD TYPE?

TOPS Payment Summary by Award Level by System for Academic Year 2021-22 As of 8/29/2022

School System	Opportunity		Performance		Honors		Tech		National Guard	TOPS Tech Early Start		Total TOPS Paid	
	#	\$	#	\$	#	\$	#	\$		#	\$	#	\$
LSU System	6,294	39,248,905.11	5,014	35,397,232.89	6,158	47,667,135.80	247	509,041.86	30,900.00	0	0.00	17,713	122,853,215.66
Southern System	541	2,334,883.95	129	646,256.14	27	155,333.51	11	18,111.00	2,400.00	0	0.00	708	3,156,984.60
University of La System	12,410	60,938,588.30	9,151	50,056,810.56	6,530	38,868,049.14	139	438,121.08	56,500.00	0	0.00	28,230	150,358,069.08
LCTC System	1,707	4,213,992.45	518	1,493,164.79	112	337,655.13	1,951	5,064,044.11	5,400.00	1,098	261,050.00	5,386	11,375,306.48
Private Schools	1,229	6,351,338.64	967	5,507,119.20	1,306	8,114,022.07	0	0.00	0.00	0	0.00	3,502	19,972,479.91
Proprietary Schools	169	332,362.41	46	117,622.38	18	50,879.51	251	461,719.05	0.00	0	0.00	484	962,583.35
Training Providers	0	0.00	0	0.00	0	0.00	0	0.00	0.00	77	23,100.00	77	23,100.00
TOTAL	22,350	113,420,070.86	15,825	93,218,205.96	14,151	95,193,075.16	2,599	6,491,037.10	95,200.00	1,175	284,150.00	56,100	308,701,739.08

*TOPS Tech Early Start not included in Average Award for LCTCS System

Note: Duplicate count – students may be counted at multiple institutions

	#	\$	Average Award
OPH	52,326	\$301,831,351.98	\$5,768.29
Tech	2,599	\$6,491,037.10	\$2,497.51

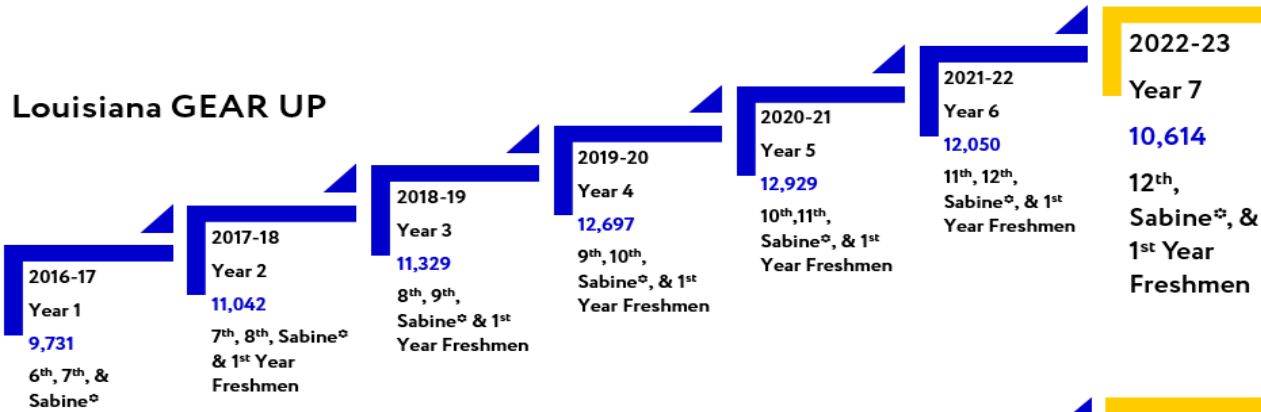
Note: Duplicate count – students may be counted at multiple institutions

Unduplicated Count of TOPS Awards AY 2021-22
54,180 (without TOPS Tech Early Start)
55,355 (with TOPS Tech Early Start)

WHAT IS THE STATUS OF GEAR-UP FUNDING?

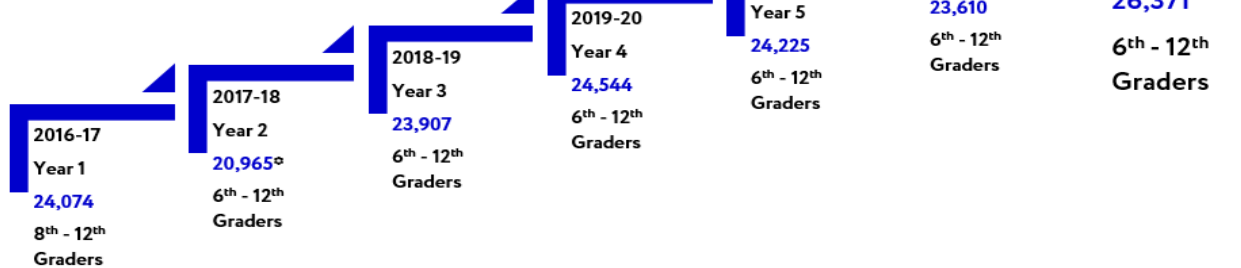
LOSFA Field Outreach Services

Number of Students Supported (Impact/Scope)



^oSabine is a priority model for grades 6-12th every year.

LOSFA Field Outreach Services (State Support)



^oDecrease attributed to ReNEW Schools no longer part of the program.

Year 7 of 7-Year Grant

- Current Louisiana GEAR UP Grant Cycle Funding ends in 2022-23. Federal funding will be exhausted at the end of this year.
- The current cohort of students in K12 school districts will graduate in May 2023. In FY 2023-24 there will be no K12 students in the cohort.
- Services to the graduating cohort who will be entering postsecondary next year can be absorbed by Student Engagement and College Access, Success, and Communications Divisions.
- Potential for new Louisiana GEAR UP funding after 2022-23 is currently unknown.

WHAT IS THE STATUS OF **GEAR-UP FUNDING?**

FY 2022-23 Budget: \$5,450,150

LA GEAR UP (La Gaining Early Awareness & Readiness for Undergraduate Programs)		
	Fed	\$3,500,000
LOSFA Field Outreach Services (LFOS)		
	SGF	\$1,950,150
*State Match for Grant		

- LOSFA anticipates that the \$3.5M in federal funds will be exhausted this year.
- The \$1.9M in SGF match is insufficient to fund the existing staff.
- If LOSFA were to reduce staff to the budgeted amount, LOSFA would be unable to fund the services to students and families required in a grant extension.

Changes from FY 2022-23 to FY 2023-24 (\$3,500,000)

LA GEAR UP (La Gaining Early Awareness & Readiness for Undergraduate Programs)		
	Fed	(\$3,500,000)

LOSFA's Plan Post-GEAR UP

- Utilize the \$1.9M in SGF match to provide outreach services identified as most valuable and most effective in the survey data.
- Focus the efforts of any staff who are retained/rehired on outreach services aimed at reaching students and parents statewide.
- Utilize VELA's expertise to apply for a GEAR UP Grant IF there is a competition next year. VELA is already contracted to provide this service.
- Utilize the best practices and survey data to craft the structure of any future grant.

Anticipated FY 2023-24 Budget: \$1,950,150

LOSFA Field Outreach Services (LFOS)		
	SGF	\$1,950,150
*State Match for Grant		

THE PLAN FOR MOVING TOWARDS DATA DRIVEN OUTREACH

WHAT DO STUDENTS AND FAMILIES SAY THEY NEED?

Affordability is one of the most important factors taken under consideration when students and their parents make decisions not only on where to attend school, but whether to pursue any form of education post-high school.

VELA INSTITUTE SURVEY

Students and Parents Need Accurate Information from Trusted Sources Sooner to Understand Affordability of College

- **Provide more information** on scholarships, the cost of college, and admission requirements as early as possible.
- **Invest in community-based support** and parent-led counseling/outreach to provide information to parents/families regarding value in college.
- **Communicate state financial aid estimates before May 1** to help students and families understand the true cost of college before typical college decisions are required.
- **Invest in direct, targeted outreach** on college affordability to students and their families, early and often..

FUTURE
CAREERS

FUTURE
EARNINGS

FUTURE
DEBT



LOSFA

CONNECTING
LOUISIANA
STUDENTS AND
FAMILIES
TO THEIR
POSTSECONDARY
OPTIONS

ECMC GROUP SURVEY

Gen Z Teens Want Shorter, More Affordable, Career-Connected Education Pathways

- **Provide more information on career and technical education options** early and what they mean for students for their career paths.
- **Include more skills-based trainings** as part of the core curriculum to support competitive job opportunities post-graduation.
- **Invest in holistic, student support programs** and initiatives to address obstacles students might face while pursuing a degree or certification.
- **Legitimize middle-skill career credentials** as part of the educational path available to graduates.

THE PLAN FOR MOVING TOWARDS DATA DRIVEN OUTREACH CHALLENGES AND BEST PRACTICES

VELA INSTITUTE	ECMC	BEST PRACTICES
Almost 85% of both high school and postsecondary students aspire to attend college. Most students are getting information from their family, yet almost half of parents don't believe college is an investment.	Of the 75% of teens who have heard about workforce shortages, 51% of them state their source of information is their parents/family.	<p>Career and College Counseling:</p> <ul style="list-style-type: none"> • College and Career Options • Cost of Choice, Cost of Attendance • Financial Aid Assistance – FAFSA, TOPS, GO, other aid • Application Assistance, ACT/SAT Prep, Early College Coursework (AP, DE, IB, CLEP) • Financial Literacy, Student Loan Debt Reduction • Advising/Counseling- Career Options to Academic Major, Entry level Salaries, Student Debt to Education value, etc. • Connections to Support Services (tutoring, health care, food pantry, housing assistance, mental health services, etc.) • Internships/Apprenticeships/Professional Development <p>Comprehensive Mentoring:</p> <ul style="list-style-type: none"> • Direct to Student Text Messaging • Peer Mentoring • Mentoring Group Sessions <p>Holistic Student Support:</p> <ul style="list-style-type: none"> • Social Emotional Learning • Social Belonging • Transition Coaching
81.2% of all students reported that their family helped them make the decision about what to do after high school, which included whether or not to attend college.	Of the 85% of teens who said they feel pressure to pursue a four-year degree (despite 52% saying they are open to a different path), 63% said they feel pressure from parents/guardians/family, which is an increase since September 2021.	
44.4% of parents do not believe that college is an investment in their child's future with 91.7% of those parents not being able to accurately identify the increased lifetime earnings a college degree affords.	50% of students from low-income households believe education after high school is necessary as opposed to 69% of students from high-income households, resulting in a 19-percentage-point difference.	
47.9% of high school seniors report they will struggle to afford college and 44.4% of parents agree that even if their child gets into college, they will struggle to afford it.	40% of students from low-income households are considering four-year college as opposed to 74% of students from high-income households, resulting in a 34-percentage-point difference.	
42.5% of all students report difficulty with the FAFSA. Some respondents are not aware of the FAFSA or that it is a high school graduation requirement.	More than 63% of teens said the cost of tuition and the amount of student loans they would need were important factors in what they choose to do after high school	
Counselors find that students underestimate the cost of college.	59% of teens worry about how they will pay for college (has remained steady for the past two years)	
59.3% of postsecondary students report that even with some financial aid, they continue to struggle to pay for college.	43% of teens said the cost of college is the most important element in their education decision, outranking job placements, completion rates and college rankings	
87.5% of all students' report cost as a factor when deciding where to go to college.		

Source: VELA Institute, Evidence Assessment: Social Emotional Learning: Interventions associated with college preparedness and postsecondary success; VELA Institute, Evidence Assessment: Financial Aid: Equitable Disbursement and Increased Completion Rates; VELA Institute, Executive Summary- LA GEAR UP Evaluation; ECMC Group, ?uestion the Quo: Gen Z Teens Seek to Blaze Their Own Education Path

USING TECHNOLOGY TO EXPAND OUTREACH

ASK
LEX



- LEX is LOSFA's virtual response assistant
- LEX is available on LOSFA's Website at www.mylosfa.la.gov
- LEX is Available **24/7** to answer questions about TOPS
- LEX now features hand-off to Live Chat during business hours

ON THE **WEB**



www.mylosfa.la.gov



custserv@la.gov
geauxfafsa@la.gov

VIRTUAL **OFFICE HOURS**

9:00 a.m. – 3:00 p.m.
Monday – Friday

THE PLAN IN ACTION: USING THE 5-POINT MATCH TO IMPLEMENT DATA DRIVEN OUTREACH

WHAT IS THE EXISTING OVERALL BUDGET?

Survey Results from VELA and ECMC indicate the following service priorities:

- Comprehensive Postsecondary Advising/Mentoring
- Career Exploration Connected to Postsecondary Pathways
- Holistic Support Services to Address Anticipated Barriers to Completion

Student Engagement (SE)/ Student Network Groups	SGF	\$274,125
--	------------	------------------

College Access, Success, and Communications (CASC)	SGF	\$1,274,276
---	------------	--------------------

LOSFA Plans to Deliver These Services Using the **5-Point Match Framework**

APTITUDE, SKILLS, AND INTERESTS	POSTSECONDARY PATHWAYS	COST OF CHOICE	SOCIAL AND EMOTIONAL	RETENTION
What are my talents?	Which postsecondary options lead to careers that match my talent?	Which postsecondary options offer the education I need with the least amount of loan debt?	Which postsecondary options offer the support I need to overcome the barriers I anticipate?	Which postsecondary option offers the best completion rate, internships, apprenticeships, and employment rates for my chosen field of study?

LOSFA utilizes a combination of technology applications, social media, student engagement groups, financial literacy events, and virtual/in-person delivery to maximize opportunity awareness and reach to Louisiana students and families across the state.

WHAT ARE THE PROJECTED BUDGET NEEDS FOR SUBSEQUENT YEARS?

BUDGET NEED: \$10,498,551

**FY 2022-23 SGF OUTREACH BUDGET:
\$3,498,551**

Student Outreach That Supports State Programs
(TOPS, GO, 529 Savings Programs, MJ Foster, etc)

College Access, Success, and Communications (CASC)	SGF	\$1,274,276
---	------------	--------------------

Student Engagement (SE)/ Student Network Groups	SGF	\$274,125
--	------------	------------------

LOSFA Field Outreach Services (LFOS)	SGF	\$1,950,150
---	------------	--------------------

**ADDITIONAL SGF OUTREACH BUDGET NEED:
\$7,000,000**

Comprehensive Intensive Outreach to Statewide K-12 Population

Implement Best Practices with LOSFA 5-Point Match	SGF	\$3,500,000
--	------------	--------------------

Comprehensive Intensive Outreach to Statewide Postsecondary Audiences
(Non-traditional, Adult, Incarcerated Individuals, etc.)

Implement Best Practices with LOSFA 5-Point Match	SGF	\$3,500,000
--	------------	--------------------

PROMOTING AND PREPARING FOR EQUITY OF COLLEGE ACCESS

PROGRAMS CURRENTLY FUNDED	PROGRAM OVERVIEW	PRIOR YEAR ACTUALS (FY 2021-22)			FUNDING TYPE	CURRENT YEAR APPROPRIATION (FY 2022-23)
		PARTICIPANT TYPE	# SERVED	DOLLARS		
Student Engagement/ Student Network Groups	Connect with professional practitioners to encourage persistence and growth. Connect students and professionals majoring or employed within a related field of study	Nursing Group	52	\$178,407	SGF	\$274,125
		Accounting/Finance Group	40			
		Engineering Group	42			
		IT/CIS Group	16			
		Student Orientation	210			
		Events Held	83			
		Total Served at Events	738			
LA GEAR UP (La Gaining Early Awareness & Readiness for Undergraduate Programs)	High Poverty Middle & High School Students – Seven-year federal grant to increase preparedness and success of low-income students in postsecondary education	6th-12th & 1st Yr Freshmen, Sabine Parish; 11th and 12th GEAR UP Cohort	11,920	\$3,733,191	Fed	\$3,500,000
LOSFA Field Outreach Services (LFOS)	Outreach Services – Preparedness and success for post secondary education	6th-12th Graders	31,908	\$2,155,678	SGF	\$1,950,150
LOSFA College Access, Success, and Communications (CASC)	College Access Services – Statewide Provision of Information on College Access and Financial Assistance Programs	F2F Contacts	5,338	\$1,064,115	SGF	\$1,274,276
		Electronic Contacts*	84,088			
START Saving Program	Earning Enhancements – Louisiana’s 529 Qualified College Saving Program	Account Owners	74,695	\$1,248,171,472	SGF	\$2,900,000
LA ABLE Program	Savings Plan - Disabled Individuals - Louisiana’s 529(a) Qualified ABLE (Achieving a Better Life Experience) Program	Account Owners	1,057	\$4,666,519	N/A	N/A
START K12 Program	Savings Plan - Louisiana’s 529 Qualified Elementary/Secondary school Saving Program	Account Owners	2,337	\$13,133,734	N/A	N/A

(Data as of 8-2022)

*Electronic Contacts include emails, Signal Vine text messages, phone calls, and Zoom virtual office hours answered/conducted by CASC staff.

PROVIDING EQUITY OF COLLEGE ACCESS

PROGRAMS CURRENTLY FUNDED	PROGRAM OVERVIEW	PRIOR YEAR ACTUALS (FY 2021-22)			FUNDING TYPE	CURRENT YEAR APPROPRIATION (FY 2022-23)
		PARTICIPANT TYPE	# SERVED	DOLLARS		
TOPS – Taylor Opportunity Program for Students	Merit Based Aid – Scholarship program (Includes Opportunity, Performance, Honors, Tech and TOPS Tech Early Start awards)	Undergraduate	55,057	\$308,458,906	SGF	\$265,804,449
					SD	\$65,130,426
					TOTAL	\$330,934,875
Louisiana GO Grant	Need Based Aid – Grant program	Undergraduate	29,874	\$40,413,715	SGF	\$55,480,716
Rockefeller State Wildlife Scholarship	Grant -La. Scholarship for forestry, wildlife and fisheries majors	Undergraduate	27	\$49,500	SD	\$60,000
		Graduate	4	\$10,500		
John R. Justice Loan Repayment Program	Loan Repayment - Assists prosecutors and public defenders with student loan debt	Prosecutors	10	\$19,500	Fed	\$63,245
		Public Defenders	4	\$19,500		
Chafee Education and Training Voucher – Administered for DCFS	Special Purpose - Provides assistance to students who have aged out of foster care	Aged-Out Foster Youth	77	\$478,500	IAT	\$352,744
GO Youth Challenge Grant	Merit Based Aid – Scholarship program	Undergraduate	16	\$35,005	SGF	\$100,000
BESE Tuition Program for Teachers	Grant - Assists current teachers to enroll in courses at Louisiana colleges and universities at the state's expense	Teachers	14	\$18,170	SGF	\$20,000
Paul Douglas – Teacher Loan Forgiveness Program	Loan Repayment Collections – to be remitted to the Fed. DOE	This appropriation is budget authority to collect repayments and remit those payments to US DOE. Program has been inactive since 1994-95.			Fed	\$50,000
Regional Contract Program (RCP)	Loan Forgiveness – Assists La residents to study Optometry or Podiatry at select out-of-state institutions.	Optometry	37	\$710,400	SGF	\$160,000
		Podiatry	0	\$0		
Strategies to Empower People (STEP) Program -- Administered for DCFS	Special Purpose–Vocational Education and Adult Education training for TANF/FITAP recipients	Adult Ed	0	\$0	IAT	\$420,998
		Voc Ed	2	\$2,400		
LCTCS 18-20 Year Old Noncredit Pilot	LCTCS Pilot for 18-20 year old -noncredit	New program starting in FY 2022-23.			Fed	\$1,196,371
LCTCS Workforce Partnerships Pilot	LCTCS Pilot for Workforce Partnerships	New program starting in FY 2022-23.			Fed	\$500,000
M.J. Foster Promise Program	Grant to adult students for degrees/credentials for high demand jobs	New program starting in FY 2022-23.			SGF	\$10,500,000
Completers Grant	Grant to incentivize near-completers (Grant scheduled to end June 30, 2023)	Undergraduate	1,524	\$2,904,141	Fed	\$4,730,453
GEAUX Teach	Students in teacher preparation programs	New program starting in FY 2022-23.			SD	\$1,250,000

(Data as of 8-2022)

PROVIDING EQUITY OF COLLEGE ACCESS

2023 Geaux Teach Budget Allocations

School	2022-2023 Allocations	
	Undergraduate Teaching Program	Alternate Certification Program
LSU-BR	\$ 53,888	\$ 8,362
LSU-A	\$ 53,888	\$ 8,362
LSU-S	\$ 53,888	\$ 8,362
LSU SYSTEM SUB-TOTAL	\$ 161,664	\$ 25,086
Southern-BR	\$ 53,888	\$ 8,362
Southern-NO	\$ -	\$ 8,362
SU SYSTEM SUB-TOTAL	\$ 53,888	\$ 16,724
Nicholls	\$ 53,888	\$ 8,362
Grambling	\$ 53,888	\$ 8,362
La. Tech	\$ 53,888	\$ 8,362
McNeese	\$ 53,888	\$ 8,362
ULM	\$ 53,888	\$ 8,362
Northwestern	\$ 53,888	\$ 8,362
Southeastern	\$ 53,888	\$ 8,362
ULL	\$ 53,888	\$ 8,362
UNO	\$ 53,888	\$ 8,362
UL SYSTEM SUB-TOTAL	\$ 484,992	\$ 75,258

School	2022-2023 Allocations	
	Undergraduate Teaching Program	Alternate Certification Program
Centenary	\$ 53,888	\$ 8,362
La Christian Univ.	\$ 53,888	\$ 8,362
Loyola	\$ 53,888	\$ 8,362
Tulane University	\$ -	\$ 8,362
Univ. of Holy Cross	\$ 53,888	\$ 8,362
Xavier	\$ 53,888	\$ 8,362
INDEPENDENTS' SUB-TOTAL	\$ 269,440	\$ 50,172
Caddo Teaching Academy (CTA)	\$ -	\$ 8,362
iteachLOUISIANA	\$ -	\$ 8,362
Jefferson Parish EMBARK Aspiring Educators	\$ -	\$ 8,362
Louisiana Resource Center for Educators (LRCE)	\$ -	\$ 8,362
Teach Ascension Academy (TAA)	\$ -	\$ 8,362
Teach St. Bernard (TeachSB)	\$ -	\$ 8,362
Teach St. Tammany	\$ -	\$ 8,362
Teach Tangi	\$ -	\$ 8,362
The New Teacher Project (TNTP Academy)	\$ -	\$ 8,362
OTHER ALT CERTIFICATION SUB-TOTAL	\$ -	\$ 75,258

Total Undergraduate	\$ 969,984
Total Alt. Certification	\$ 242,498
Grand Total	\$ 1,212,482

CONNECT WITH **LOSFA**



Facebook
@losfa



Twitter
@losfa



YouTube
@losfa1000



Instagram
@losfa001

LOSFA also uses **Signal Vine Text Messaging** to connect with students and families. To receive important information and updates from LOSFA, sign up for Signal Vine by texting “LOSFA” to 56500.

A large, stylized blue elephant head is the background of the slide. The elephant is wearing a graduation cap (mortarboard) with a tassel. The entire image is rendered in shades of blue.

QUESTIONS?

System Responses Overview

Financial Successes

- Statewide faculty pay increases of 5.6% and \$3,492
- Federal HEERF dollars benefitted institutions
- Academic programming aligning to the Master Plan

Financial Concerns

- Enrollment declines
- All systems noted a need for increased staff pay and high turnover rates
- Inflation and increased utility costs



FY 2022-2023 Louisiana Community and Technical College System Budget Overview

September 20, 2022

Dr. Monty Sullivan
President

Joe Marin
Chief Administration Officer





LCTC System

Means of Financing	Budgeted FY 2021-2022	Budgeted FY 2022-2023	Over/Under EOB
State General Fund (SGF)	\$134,001,277	\$145,992,229	\$11,990,952
Statutory Dedications	\$15,141,932	\$61,322,227	\$46,180,295
Interagency Transfers (IAT)	\$0	\$0	\$0
Self-Generated Revenue (SGR)	\$172,630,000	\$169,539,000	(\$3,100,000)
Federal Funds	\$0	\$0	\$0
TOTAL	\$321,773,209	\$376,844,456	\$55,071,247

Expenditures by Object	Budgeted FY 2021-2022	Budgeted FY 2022-2023	Over/Under EOB
Personal Services	\$245,277,088	\$251,844,041	\$6,566,953
Operating Expenses	\$38,903,593	\$39,347,388	\$443,795
Other Charges	\$34,808,698	\$81,233,697	\$46,426,999
Acquisitions and Major Repairs	\$2,783,831	\$4,419,330	\$1,635,499
TOTAL EXPENDITURES	\$321,773,209	\$376,844,456	\$55,071,247

FY 2022-2023

Southern University System

Budget Overview

September 20, 2022

Dennis Shields
President

Flandus McClinton
Vice President of Finance and Business Affairs





Southern University System

Means of Financing	Budgeted FY 2021-2022	Budgeted FY 2022-2023	Over/Under EOB
State General Fund (SGF)	\$51,673,797	\$56,075,432	\$4,401,635
Statutory Dedications	\$4,250,997	\$4,530,158	\$279,161
Interagency Transfers (IAT)	\$3,869,822	\$3,869,822	\$0
Self-Generated Revenue (SGR)	\$104,962,570	\$111,987,606	\$7,025,036
Federal Funds	\$6,154,209	\$3,654,209	(\$2,500,000)
TOTAL	\$170,911,395	\$180,117,227	\$9,205,832

Expenditures by Object	Budgeted FY 2021-2022	Budgeted FY 2022-2023	Over/Under EOB
Personal Services	\$114,803,243	\$121,602,088	\$6,798,845
Operating Expenses	\$21,050,154	\$20,190,279	(\$859,875)
Other Charges	\$33,352,192	\$36,484,875	\$3,132,683
Acquisitions and Major Repairs	\$1,705,806	\$1,839,985	\$134,179
TOTAL EXPENDITURES	\$170,911,395	\$180,117,227	\$9,205,832



SOUTHERN[®]
UNIVERSITY SYSTEM

BATON ROUGE • NEW ORLEANS • SHREVEPORT

FY 22 Budget Hearing

Presented to the
Louisiana Board of Regents

Dennis J. Shields
President-Chancellor

SU System SACSCOC Accreditation

The successful reaffirmation of our System campuses by the Southern Association of Colleges and Schools Commission on Colleges (SACSCOC) proved to be one of our milestones the past year.

- ✓ SUBR, SUNO, SUSLA, and SULC have all received reaccreditation for 10 years



First Year Priorities



Priority One: Improve the Student Experience

- Positive and successful first-year experience
- Improving persistence to graduation rate
- Enhancing student engagement



Priority Two: Enhance University- Community Engagement

- Concept of stewards of place
 - Communities adjacent to campus
 - State/region/city
- K-12 achievement and college readiness



Priority Three:

Intentional and Robust Engagement with External Stakeholders

- Business and Industry
- Governing Board
- Local/State/National
- Alumni



Enrollment Data Comparison

Southern University System					
Enrollment Data Comparison					
<i>Headcount Enrollment</i>					
INSTITUTION	FALL 2021	FALL 2020	DIFFERENCE	FALL 2022 PRELIMINARY	DIFFERENCE
SUBR	7,412	6,917	495	7,542	130
SULC	905	831	74	938	33
SUNO	2,106	2,264	(158)	2,117	11
SUSLA	2,745	2,457	288	3,011	266
Total SU System	13,168	12,469	699	13,608	440

FY 24 Needs

CAMPUS	FY 24 FUNDING NEEDS	DEFERRED MAINTENANCE
SUBR	\$15,117,034	\$66,231,000
SULC	5,813,219	1,731,000
SUNO	6,585,033	11,945,000
SUSLA	1,155,118	15,965,000
SU AG	2,788,017	8,000,000
TOTALS	\$31,458,422	\$103,872,000

Questions



FY 2022-2023

University of Louisiana System

Budget Overview

September 20, 2022

Dr. Jim Henderson
President

Eddie Meche
Vice President Business and Finance





University of Louisiana System

Means of Financing	Budgeted FY 2021-2022	Budgeted FY 2022-2023	Over/Under EOB
State General Fund (SGF)	\$244,866,278	\$267,855,060	\$22,988,782
Statutory Dedications	\$15,206,377	\$17,894,587	\$2,688,210
Interagency Transfers (IAT)	\$259,923	\$259,923	\$0
Self-Generated Revenue (SGR)	\$674,041,645	\$676,482,759	\$2,441,114
Federal Funds	\$0	\$0	\$0
TOTAL	\$934,374,223	\$962,492,329	\$28,118,106

Expenditures by Object	Budgeted FY 2021-2022	Budgeted FY 2022-2023	Over/Under EOB
Personal Services	\$664,374,890	\$684,470,408	\$20,095,518
Operating Expenses	\$90,128,601	\$103,299,955	\$13,171,354
Other Charges	\$167,256,522	\$161,701,386	(\$5,555,136)
Acquisitions and Major Repairs	\$12,614,210	\$13,020,5890	\$406,370
TOTAL EXPENDITURES	\$934,374,223	\$962,492,329	\$28,118,106

FY 2022-2023

Louisiana State University

System Budget Overview

September 20, 2022

Dr. William Tate IV
President

Kimberly Lewis
Executive Vice President & Chief Administrative
Officer





Louisiana State University System

Means of Financing	Budgeted FY 2021-2022	Budgeted FY 2022-2023	Over/Under EOB
State General Fund (SGF)	\$389,583,672	\$429,998,436	\$40,414,764
Statutory Dedications	\$27,311,973	\$25,476,072	(\$1,835,901)
Interagency Transfers (IAT)	\$7,764,963	\$7,764,963	\$0
Self-Generated Revenue (SGR)	\$687,498,245	\$718,046,454	\$30,548,209
Federal Funds	\$13,018,275	\$13,018,275	\$0
TOTAL	\$1,125,177,128	\$1,194,304,200	\$69,127,072

Expenditures by Object	Budgeted FY 2021-2022	Budgeted FY 2022-2023	Over/Under EOB
Personal Services	\$754,849,491	\$789,374,895	\$34,525,404
Operating Expenses	\$134,249,195	\$158,133,780	\$23,884,585
Other Charges	\$222,519,226	\$234,710,950	\$12,191,724
Acquisitions and Major Repairs	\$13,559,216	\$12,084,575	(\$1,474,641)
TOTAL EXPENDITURES	\$1,125,177,128	\$1,194,304,200	\$69,127,072



OFFICE OF THE PRESIDENT

Louisiana Board of Regents Budget Hearing

SEPTEMBER 20, 2022

Working for Louisiana: LSU Academic & Research Priorities

With historic Higher Education funding, LSU has prioritized these investments in FY23 and is requesting additional resources to continue for the future

	FY24 Request
Scholarship First	\$18.4M
NCI Designation	\$16M
Graduate Education & Research	\$25M
Maintain and Enhance Research & Statewide Extension Presence	\$15.7M
Faculty Salary Competitiveness & Staffing Solutions	\$19.5M

LSU Academic & Research Priorities (cont.)

Foster Statewide Economic Impact Through Research Enterprise LSU FY21 R&D Expenditures by Campus (\$'s in thousands)

Fund Source	LSU	AgCenter	PBRC	LSUS	HSCNO	HSCS	Total
Federal Government	\$ 67,605	\$ 12,215	\$ 23,358	\$ 273	\$ 34,272	\$ 15,184	\$ 152,907
State/Local Governments	\$ 14,024	\$ 54,739	\$ 1,403	\$ 24	\$ 244	\$ 19	\$ 70,453
Industry	\$ 5,367	\$ 3,805	\$ 2,320	\$ 1	\$ 2,800	\$ 297	\$ 14,590
Institution Funded	\$ 75,078	\$ 11,147	\$ 12,199	\$ 143	\$ 3,743	\$ 8,771	\$ 111,081
Other	\$ 5,304	\$ 2,205	\$ 5,904	\$ 21	\$ 3,311	\$ 3,160	\$ 19,905
Total	\$ 167,378	\$ 84,111	\$ 45,184	\$ 462	\$ 44,370	\$ 27,431	\$ 368,936

Source: NSF HERD Survey

LSU System Additional Funding Needs

Student Information System

- \$18.4M FY24 need (all campuses except health science centers)

Deferred Maintenance

- \$1 Billion backlog system-wide

Mandated Costs

- Baseline needs to allow for other strategic investments