

PERCENT STUDENT STATION UTILIZATION OF OCCUPIED CLASSROOMS AND CLASS LABORATORIES

TABLE 7

The statistics which reflect percent of student utilization are extremely valuable when planning new facilities. They provide a general guide for the need for various sizes of classrooms and laboratories. The comparison between how well the teaching facilities accommodate the size of the classes being conducted in them is helpful; however, the ratio does not indicate how efficiently the facilities are being used. It must be noted that data in Table 7 only include rooms which are in use (scheduled), and is, therefore, an indication of how the capacity of the room is matched to the number of students in the class.

The percent of student station utilization is derived from the ratio of the total student hours of instruction to the potential student hours of instruction. The total student hours of instruction is defined as the enrollment of the class multiplied by the hours the class meets per day which is then multiplied by the number of days per week the class meets. The potential student hours of instruction is defined as the number of hours that the course meets each week, rounded to the nearest half hour, multiplied by the number of days per week the class meets. This figure is then multiplied by the capacity of the room.

Norm: Classrooms - 60% Student Station Utilization
Laboratories - 80% Student Station Utilization

$$\text{Percent Student Station Utilization} = \frac{\text{Total Student Hours of Instruction}}{\text{Potential Student Hours of Instruction}}$$

As we continue with the sample data:

| ENROLL- MENT | ROOM TYPE | CAPACITY | | | | |
|-----------------|--------------|------------------------|-----|----|------------------------|-----|
| 33 | 110 | 3 days * 1 hour * 33 = | 99 | 50 | 3 days * 1 hour * 50 = | 150 |
| 40 | 110 | 2 days * 1.5 hr * 40 = | 120 | 50 | 2 days * 1.5 hr * 50 = | 150 |
| 46 | 110 | 3 days * 1 hour * 46 = | 138 | 50 | 3 days * 1 hour * 50 = | 150 |
| 26 | 110 | 2 days * 1.5 hr * 26 = | 78 | 50 | 2 days * 1.5 hr * 50 = | 150 |
| 52 | 110 | 3 days * 1 hour * 52 = | 156 | 50 | 3 days * 1 hour * 50 = | 150 |
| 45 | 110 | 3 days * 1 hour * 45 = | 135 | 50 | 3 days * 1 hour * 50 = | 150 |
| 54 | 110 | 2 days * 1.5 hr * 54 = | 162 | 50 | 2 days * 1.5 hr * 50 = | 150 |
| 26 | 110 | 3 days * 1 hour * 26 = | 78 | 50 | 3 days * 1 hour * 50 = | 150 |

| | | | | |
|----|-----|----------------------------|-------|----------------------------|
| 30 | 110 | 3 days * 1 hour * 30 = 90 | 50 | 3 days * 1 hour * 50 = 150 |
| 39 | 110 | 2 days * 1.5 hr * 39 = 117 | 50 | 2 days * 1.5 hr * 50 = 150 |
| | | | ----- | ----- |
| | | TOTALS | 1,173 | 1,500 |
| 17 | 210 | 1 day * 3 hrs * 17 = 51 | 24 | 1 day * 3 hrs * 24 = 72 |
| 14 | 210 | 1 day * 3 hrs * 14 = 42 | 24 | 1 day * 3 hrs * 24 = 72 |
| 25 | 210 | 3 days * 1 hour * 25 = 75 | 40 | 1 day * 3 hrs * 40 = 120 |
| 35 | 210 | 3 days * 1 hour * 35 = 105 | 40 | 1 day * 3 hrs * 40 = 120 |
| 30 | 210 | 2 days * 1.5 hr * 30 = 90 | 40 | 1 day * 3 hrs * 40 = 120 |
| 29 | 210 | 1 day * 3 hrs * 29 = 87 | 40 | 1 day * 3 hrs * 40 = 120 |
| 21 | 210 | 1 day * 3 hrs * 21 = 63 | 40 | 1 day * 3 hrs * 40 = 120 |
| 22 | 210 | 1 day * 3 hrs * 22 = 66 | 40 | 1 day * 3 hrs * 40 = 120 |
| 13 | 210 | 1 day * 3 hrs * 13 = 39 | 24 | 1 day * 3 hrs * 24 = 72 |
| 16 | 210 | 1 days * 3 hrs * 16 = 48 | 24 | 1 day * 3 hrs * 24 = 72 |
| | | | ----- | ----- |
| | | TOTALS | 666 | 1,008 |

Total Student Hours in Classrooms = 1173

Capacity in Classrooms = 1500
----- = .782 or 78%

Total Student Hours in Class Laboratories = 666

Capacity in Class Laboratories = 1008
----- = .660 or 66%

The report for one institution would look like this:

| | FTE | CLASSROOMS | LABORATORIES |
|-------------|-------|------------|--------------|
| Institution | 5,411 | 78.2 | 66.0 |

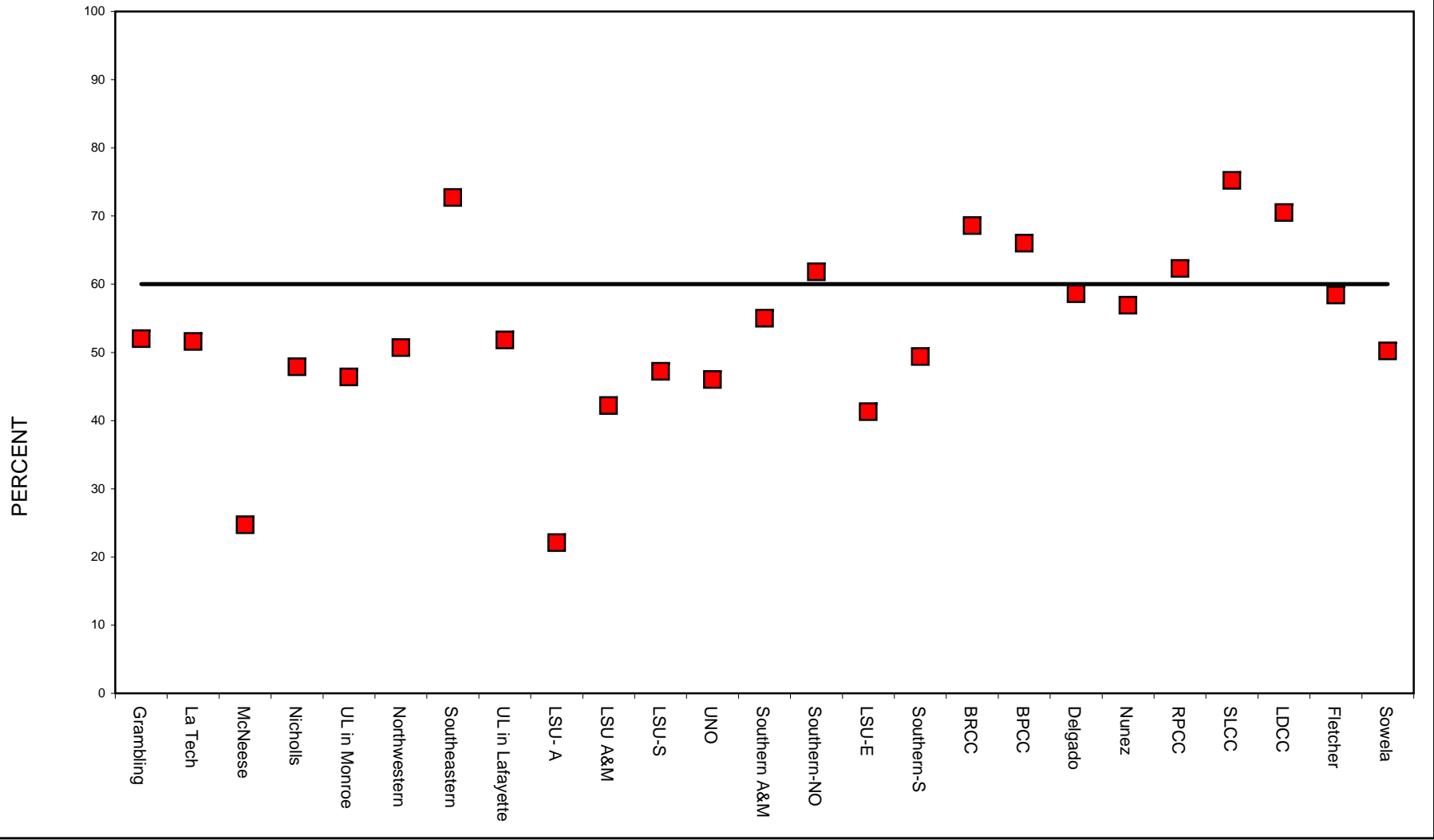
TABLE 7
PERCENT STUDENT STATION UTILIZATION OF OCCUPIED
CLASSROOMS AND CLASS LABORATORIES

| INSTITUTION | FTE | CLASSROOMS | | | | | LABORATORIES | | | | |
|--------------------------------------|--------|------------|------|------|------|------|--------------|------|------|-------|-------|
| | | 2012 | 2011 | 2010 | 2009 | 2008 | 2012 | 2011 | 2010 | 2009 | 2008 |
| PUBLIC FOUR YEAR INSTITUTIONS | | | | | | | | | | | |
| Grambling State University | 4,597 | 52.0 | 51.8 | 50.5 | 48.8 | 52.9 | 53.6 | 68.7 | 73.6 | 74.9 | 77.0 |
| Louisiana Tech University | 9,121 | 51.6 | 48.8 | 35.2 | 35.9 | 35.6 | 63.1 | 59.3 | 53.5 | 52.0 | 52.6 |
| McNeese State University | 7,360 | 24.7 | 28.8 | 30.4 | 31.7 | 30.7 | 47.7 | 43.4 | 45.6 | 40.4 | 38.6 |
| Nicholls State University | 5,635 | 47.9 | 50.3 | 54.1 | 53.7 | 50.4 | 49.6 | 51.7 | 45.4 | 47.1 | 45.2 |
| University of Louisiana in Monroe | 6,798 | 46.4 | 54.7 | 48.8 | 43.7 | 49.3 | 54.8 | 47.4 | 49.8 | 46.3 | 57.4 |
| Northwestern State University | 7,002 | 50.7 | 51.2 | 46.4 | 46.7 | 43.6 | 37.4 | 35.4 | 32.5 | 34.2 | 44.8 |
| Southeastern Louisiana University | 12,282 | 72.7 | 73.5 | 72.0 | 67.3 | 63.6 | 45.2 | 50.6 | 57.3 | 45.6 | 45.9 |
| University of Louisiana in Lafayette | 14,309 | 51.8 | 58.3 | 59.2 | 57.8 | 56.7 | 66.1 | 59.2 | 66.7 | 66.6 | 62.9 |
| LSU at Alexandria | 1,617 | 22.1 | 24.4 | 19.6 | 38.2 | 38.2 | 44.4 | 42.6 | 52.9 | 40.5 | 40.5 |
| LSU A&M (Including Ag. & Law) | 28,051 | 42.2 | 44.8 | 40.4 | 44.5 | 48.8 | 58.1 | 55.9 | 58.1 | 55.5 | 56.6 |
| LSU in Shreveport | 2,984 | 47.2 | 51.3 | 46.3 | 44.0 | 44.0 | 55.2 | 52.2 | 65.3 | 65.7 | 65.7 |
| University of New Orleans | 7,803 | 46.0 | 47.1 | 49.9 | 50.4 | 46.2 | 64.9 | 66.8 | 58.5 | 63.4 | 67.7 |
| Southern University A&M | 5,703 | 55.0 | 55.0 | 59.5 | 57.3 | 50.7 | 45.4 | 45.7 | 48.8 | 66.9 | 72.6 |
| Southern University at New Orleans | 2,284 | 61.8 | 25.4 | 57.8 | ** | ** | 88.0 | 50.5 | 94.5 | ** | ** |
| PUBLIC TWO YEAR INSTITUTIONS | | | | | | | | | | | |
| LSU at Eunice | 1,934 | 41.3 | 48.9 | 50.9 | 46.8 | 46.8 | 46.6 | 46.3 | 49.7 | 52.3 | 51.3 |
| Southern University at Shreveport | 2,125 | 49.4 | 39.7 | 52.0 | 66.3 | 47.1 | 85.3 | 77.9 | 73.4 | 131.1 | 89.0 |
| Baton Rouge Community College | 5,785 | 68.6 | 67.2 | 71.8 | 73.0 | 71.6 | 66.4 | 65.7 | 69.8 | 71.2 | 72.3 |
| Bossier Parish Community College | 5,566 | 66.0 | 64.1 | 72.5 | 66.0 | 58.2 | 65.1 | 62.8 | 67.2 | 56.4 | 43.0 |
| Delgado Community College | 11,427 | 58.6 | 63.2 | 70.2 | 73.0 | 66.9 | 47.9 | 54.2 | 54.9 | 53.9 | 53.8 |
| Nunez Community College | 1,195 | 56.9 | 52.8 | 79.0 | 63.6 | 7.8 | 88.3 | 0.0 | 0.0 | 76.8 | 8.6 |
| River Parishes Community College | 1,765 | 62.3 | 61.5 | 57.2 | 66.7 | 72.3 | 31.0 | 72.4 | 21.3 | 71.8 | 103.2 |
| South Louisiana Community College | 2,481 | 75.2 | 69.6 | 77.2 | 77.4 | 75.9 | 66.0 | 64.2 | 88.1 | 73.7 | 86.2 |
| Acadian | 176 | 29.9 | 29.7 | 30.0 | 34.5 | 30.0 | 25.4 | 20.0 | 26.2 | 23.2 | 27.8 |
| Charles B. Coreil | 122 | 26.4 | 22.5 | 29.2 | 37.3 | 53.9 | 13.4 | 25.0 | 18.1 | 16.9 | 0.0 |
| Evangeline | 148 | 0.0 | 0.0 | 0.0 | 0.0 | 0.0 | 0.0 | 63.8 | 39.7 | 56.5 | 36.6 |
| Gulf Area | 349 | 62.4 | 72.1 | 72.1 | 75.0 | 40.7 | 25.8 | 32.6 | 32.6 | 39.8 | 27.4 |
| Lafayette | 699 | 69.5 | 62.7 | 69.6 | 63.9 | 25.0 | 35.7 | 44.9 | 34.2 | 25.0 | 23.2 |
| T. H. Harris | 394 | 8.9 | 3.2 | 15.7 | 18.2 | 21.1 | 24.4 | 5.2 | 32.3 | 25.4 | 21.0 |

| | | | | | | | | | | | |
|--|-------|-------|-------|-------|-------|------|------|-------|------|-------|------|
| Teche Area | 250 | 0.0 | 12.0 | 16.1 | 11.1 | 17.4 | 0.0 | 20.7 | 24.2 | 26.1 | 20.3 |
| Louisiana Delta Community College | 1,931 | 58.4 | 59.2 | 62.5 | 82.1 | ** | 14.4 | 16.7 | 17.8 | 0.0 | ** |
| Bastrop | 108 | 58.7 | 33.0 | 20.2 | 32.3 | 49.0 | 19.7 | 13.2 | 30.0 | 29.8 | 11.9 |
| Delta Ouachita | 302 | 45.9 | 59.9 | 37.6 | 66.3 | 43.0 | 13.6 | 15.4 | 20.1 | 16.8 | 13.2 |
| North Central | 12 | 82.7 | 25.0 | 115.2 | 115.2 | 4.6 | 43.3 | 14.9 | 31.1 | 31.1 | 11.7 |
| Northeast | 100 | 18.7 | 40.3 | 26.5 | 58.7 | 44.4 | 44.6 | 36.3 | 32.7 | 41.1 | 19.1 |
| Ruston | 105 | 62.9 | 68.8 | 14.5 | 14.5 | 15.3 | 13.9 | 42.9 | 59.8 | 59.8 | 27.2 |
| L. E. Fletcher Tech Community College | 1,517 | 28.5 | 47.0 | 52.9 | 58.0 | 54.3 | 41.7 | 28.6 | 26.7 | 21.0 | 23.6 |
| Sowela Technical Community College | 1,974 | 50.2 | 53.8 | 97.6 | 69.9 | 60.1 | 54.2 | 41.3 | 71.0 | 60.1 | 21.8 |
| Capital Area Technical College | | | | | | | | | | | |
| Baton Rouge | 846 | 71.0 | 76.3 | 87.6 | 102.2 | 57.0 | 16.5 | 29.0 | 36.9 | 28.4 | 25.9 |
| Folkes | 600 | 25.3 | 51.7 | 64.2 | 34.6 | 26.5 | 31.1 | 133.3 | 42.9 | 90.6 | 0.0 |
| Jumonville | 126 | 22.7 | 26.8 | 27.6 | 14.7 | 16.6 | 28.6 | 12.3 | 32.1 | 0.0 | 9.3 |
| Westside | 173 | 32.9 | 70.8 | 36.4 | 36.8 | 34.5 | 0.0 | 0.0 | 0.0 | 0.0 | 0.0 |
| South Central LA Technical College | | | | | | | | | | | |
| Lafourche | 153 | 21.4 | 39.1 | 39.8 | 54.6 | 43.7 | 19.9 | 22.6 | 24.8 | 28.1 | 26.9 |
| River Parishes | 778 | 40.5 | 44.0 | 36.4 | 40.2 | 64.3 | 14.7 | 20.7 | 26.8 | 18.5 | 22.0 |
| Young Memorial | 330 | 36.6 | 47.5 | 37.8 | 51.9 | 22.4 | 38.1 | 19.9 | 16.1 | 22.0 | 20.5 |
| Central LA Technical College | | | | | | | | | | | |
| Alexandria | 298 | 51.0 | 40.2 | 83.8 | 49.8 | 51.7 | 20.1 | 19.2 | 21.0 | 25.1 | 31.3 |
| Avoyelles | 375 | 15.9 | 21.3 | 46.1 | 39.7 | 8.7 | 31.6 | 18.1 | 37.6 | 91.7 | 33.4 |
| Huey P. Long | 238 | 0.0 | 37.9 | 15.5 | 21.6 | 22.1 | 10.6 | 26.5 | 36.6 | 34.3 | 29.3 |
| Lamar Salter | 146 | 21.7 | 17.0 | 19.3 | 0.0 | 12.7 | 8.5 | 9.0 | 21.4 | 16.0 | 12.6 |
| Oakdale | 226 | 117.4 | 53.9 | 69.5 | 86.4 | 32.8 | 25.6 | 27.6 | 37.6 | 28.3 | 33.8 |
| Shelby Jackson | 144 | 53.9 | 4.3 | 39.9 | 33.5 | 32.3 | 0.0 | 0.0 | 6.0 | 8.3 | 8.5 |
| Northwest LA Technical College | | | | | | | | | | | |
| Mansfield | 112 | 36.9 | 33.7 | 36.1 | 34.7 | 39.2 | 5.4 | 8.8 | 8.1 | 10.4 | 7.1 |
| Natchitoches | 219 | 61.6 | 44.1 | 34.2 | 62.7 | 39.6 | 0.0 | 0.0 | 0.0 | 200.0 | 0.0 |
| Northwest | 333 | 61.1 | 55.0 | 59.5 | 66.3 | 33.3 | 13.0 | 12.5 | 21.9 | 25.3 | 31.1 |
| Sabine Valley | 60 | 49.0 | 29.5 | 70.0 | 10.4 | 32.8 | 0.0 | 0.0 | 0.0 | 0.0 | 0.0 |
| Shreveport Bossier | 420 | 41.0 | 35.4 | 35.6 | 40.5 | 23.6 | 32.9 | 21.3 | 11.6 | 16.3 | 23.3 |
| Northshore Technical Community College | | | | | | | | | | | |
| Florida Parishes | 349 | 42.4 | 68.3 | 101.6 | 60.6 | 52.9 | 22.7 | 25.3 | 21.7 | 27.2 | 31.9 |
| Hammond | 395 | 17.8 | 110.8 | 73.4 | 50.4 | 34.9 | 28.3 | 41.9 | 91.2 | 62.0 | 33.0 |
| Sullivan | 783 | 29.2 | 36.8 | 39.4 | 54.4 | 31.3 | 18.1 | 38.0 | 41.3 | 38.6 | 35.6 |

*DOES NOT INCLUDE SATURDAY CLASSES

PERCENT STUDENT STATION UTILIZATION OF OCCUPIED CLASSROOMS (TABLE 7) 2012



PERCENT STUDENT STATION UTILIZATION OF OCCUPIED CLASS LABS (TABLE 7) 2012

