

# MEETING LOUISIANA'S WORKFORCE DEMAND

Monty Sullivan

# COMMUNITY & TECHNICAL COLLEGES

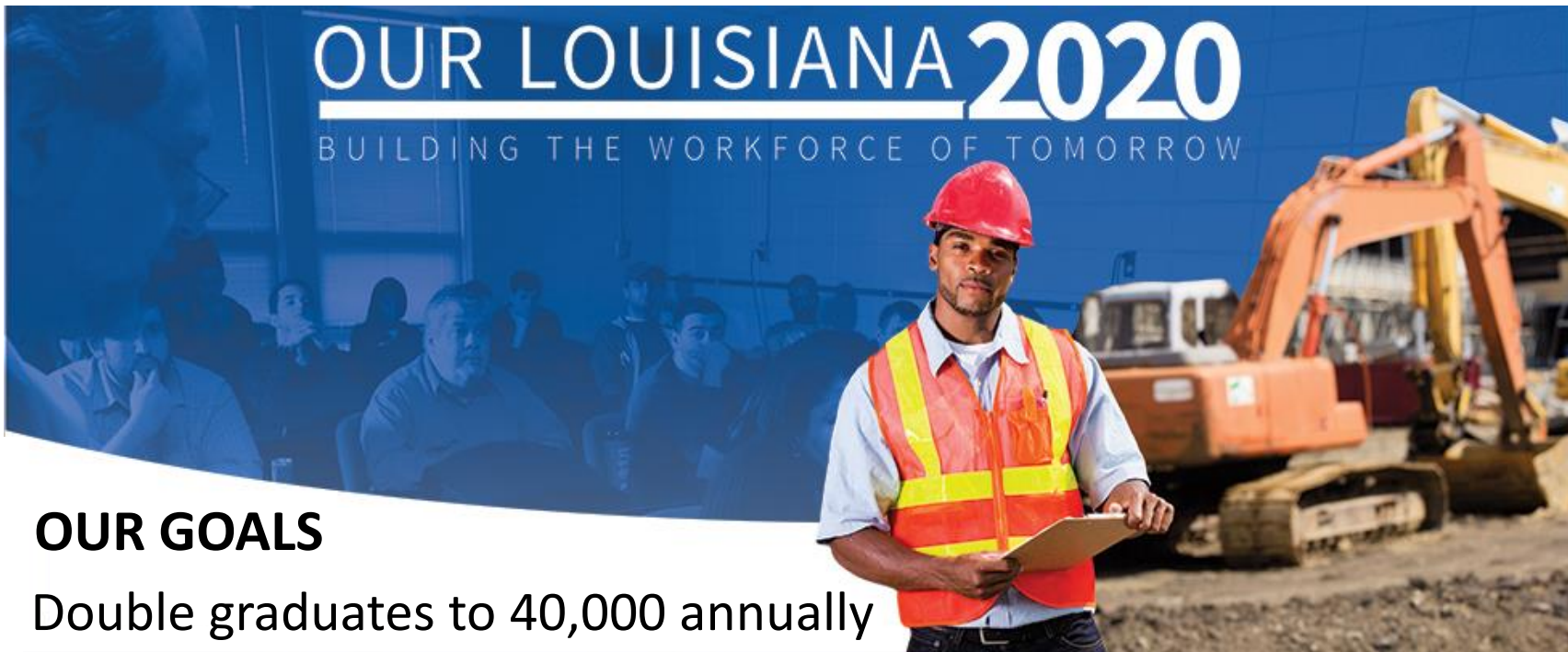


# COMMUNITY & TECHNICAL COLLEGE MISSION

- Open Admissions
- Workforce Development and Competitiveness
- College and Career Readiness
- Transfer
- Adult Education

# OUR LOUISIANA 2020

BUILDING THE WORKFORCE OF TOMORROW

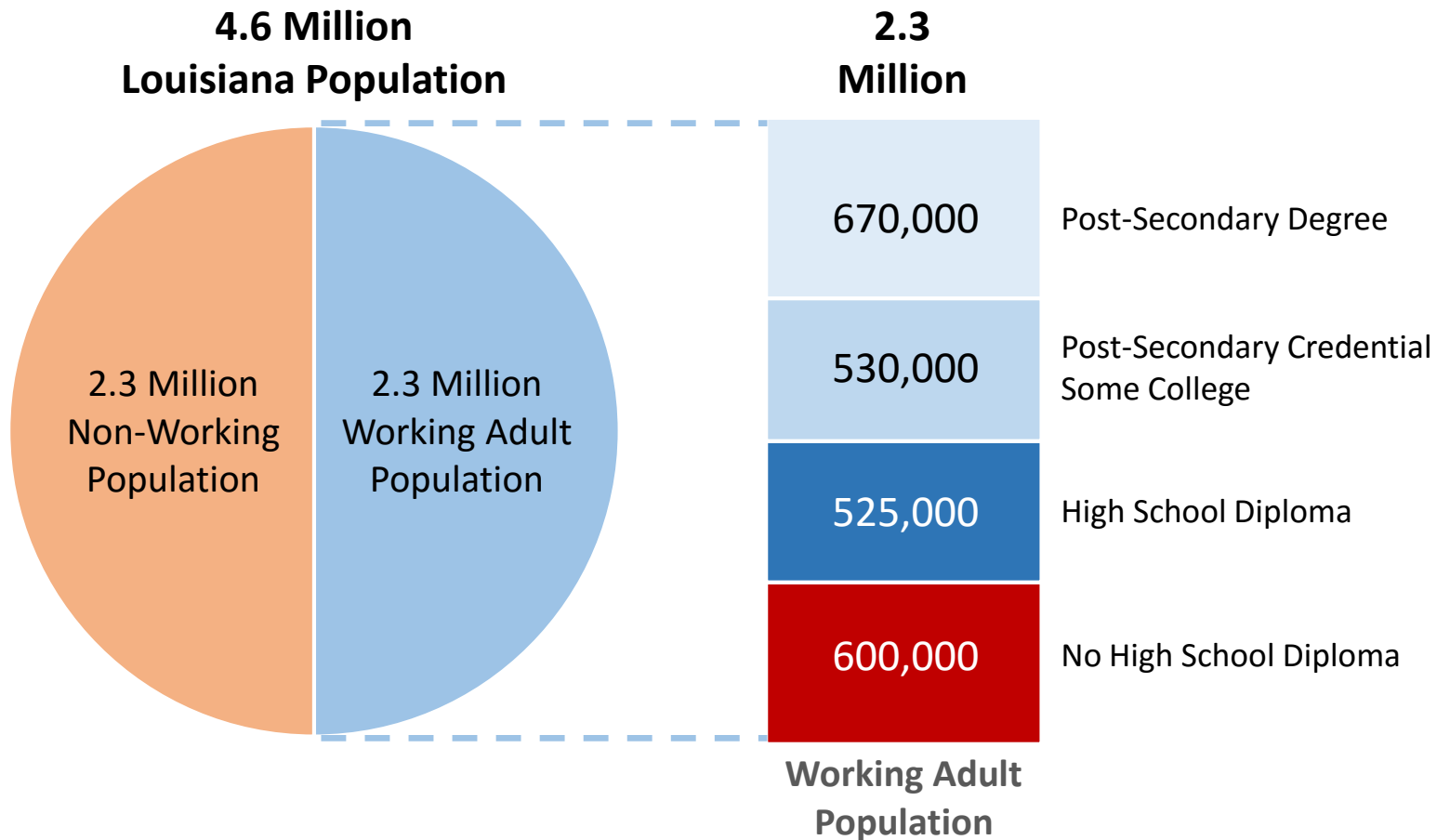


## OUR GOALS

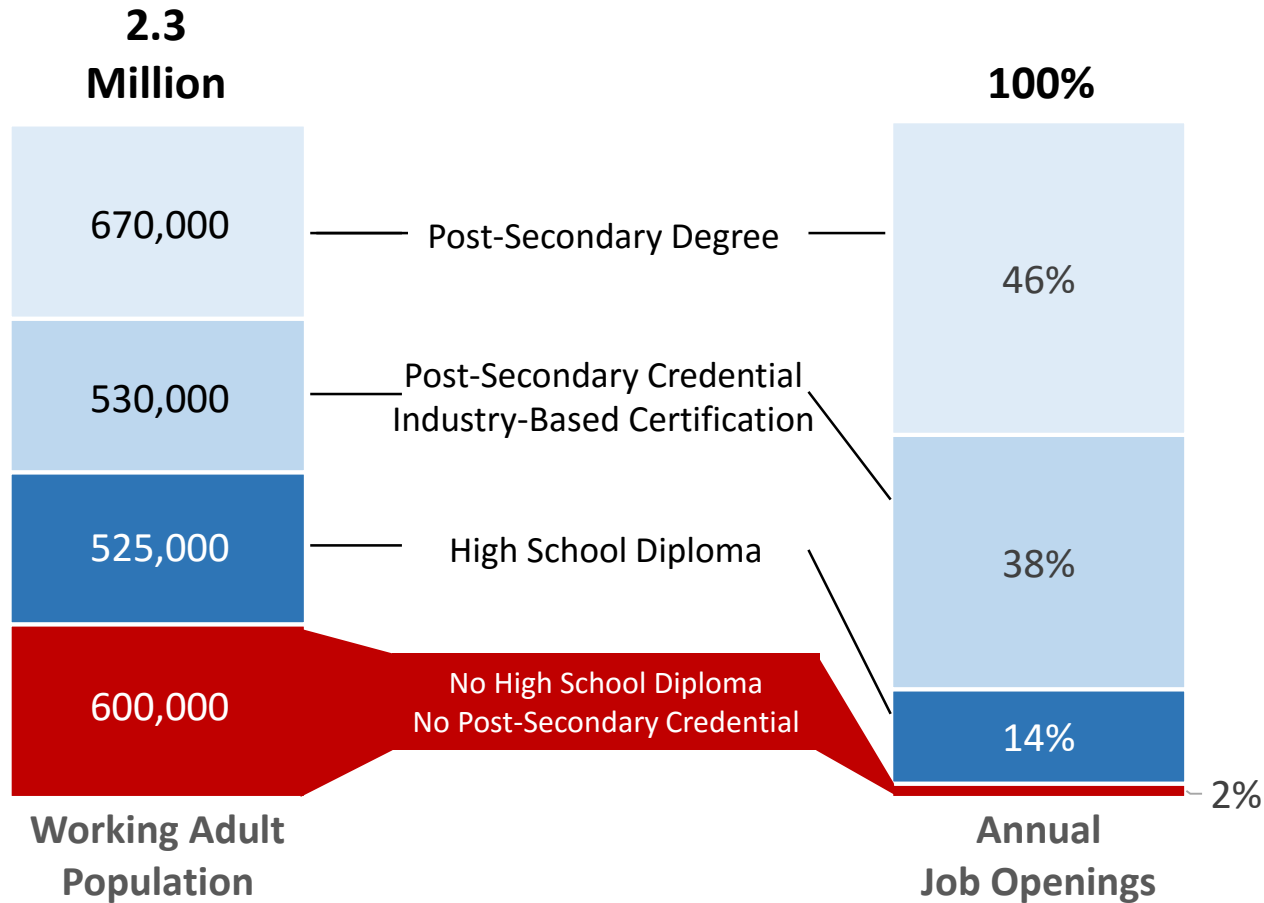
- Double graduates to 40,000 annually
- Double earnings of an annual graduating class to \$1.5 Billion
- Quadruple student transfers to universities to 10,000 annually
- Double students served to 325,000 annually
- Quadruple partnerships with businesses to 1,000 annually
- Double foundation assets to \$50 million



# LOUISIANA'S WORKFORCE POPULATION

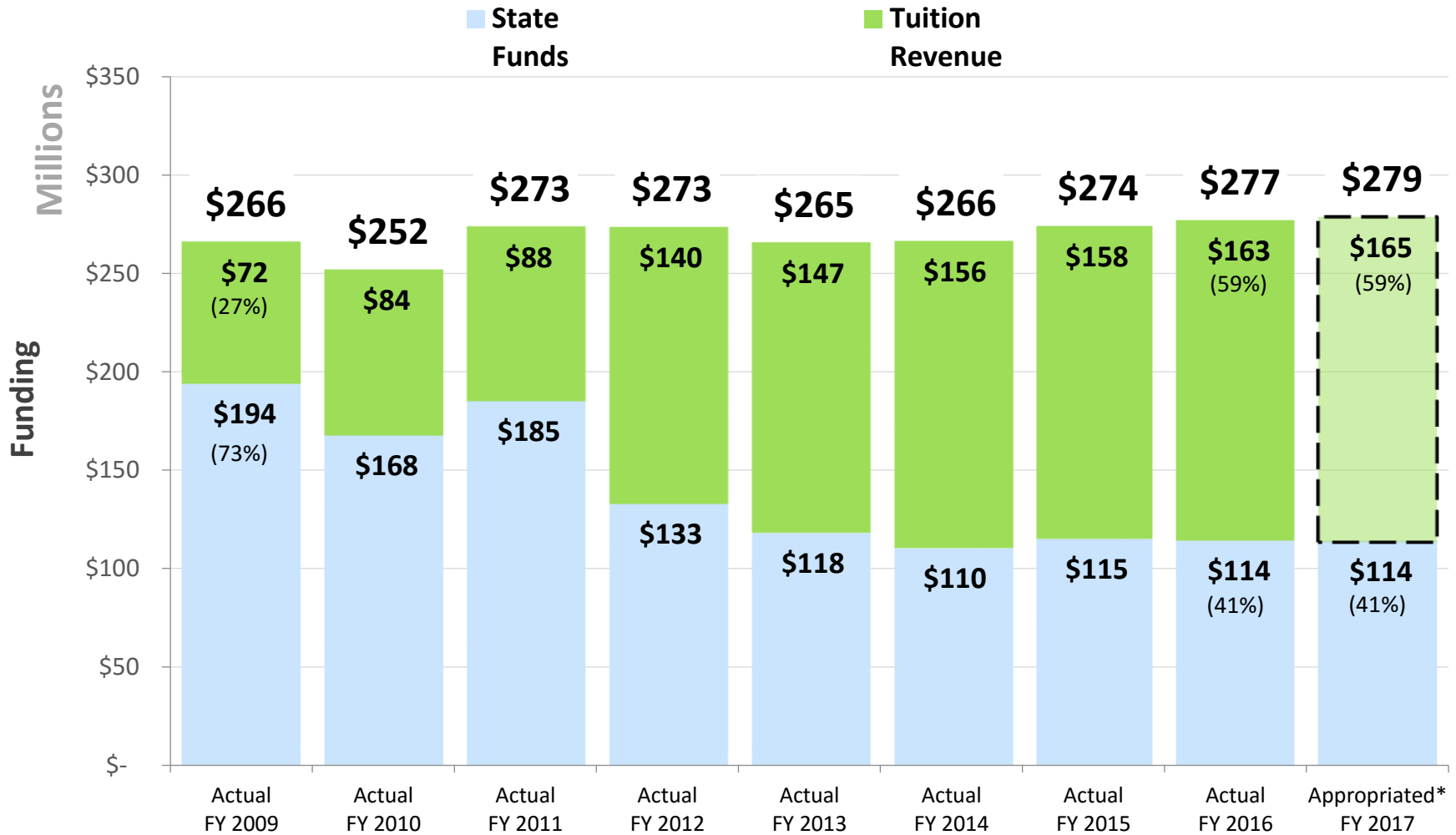


# SKILLS NOT ALIGNED TO HIGH-DEMAND JOB OPENINGS



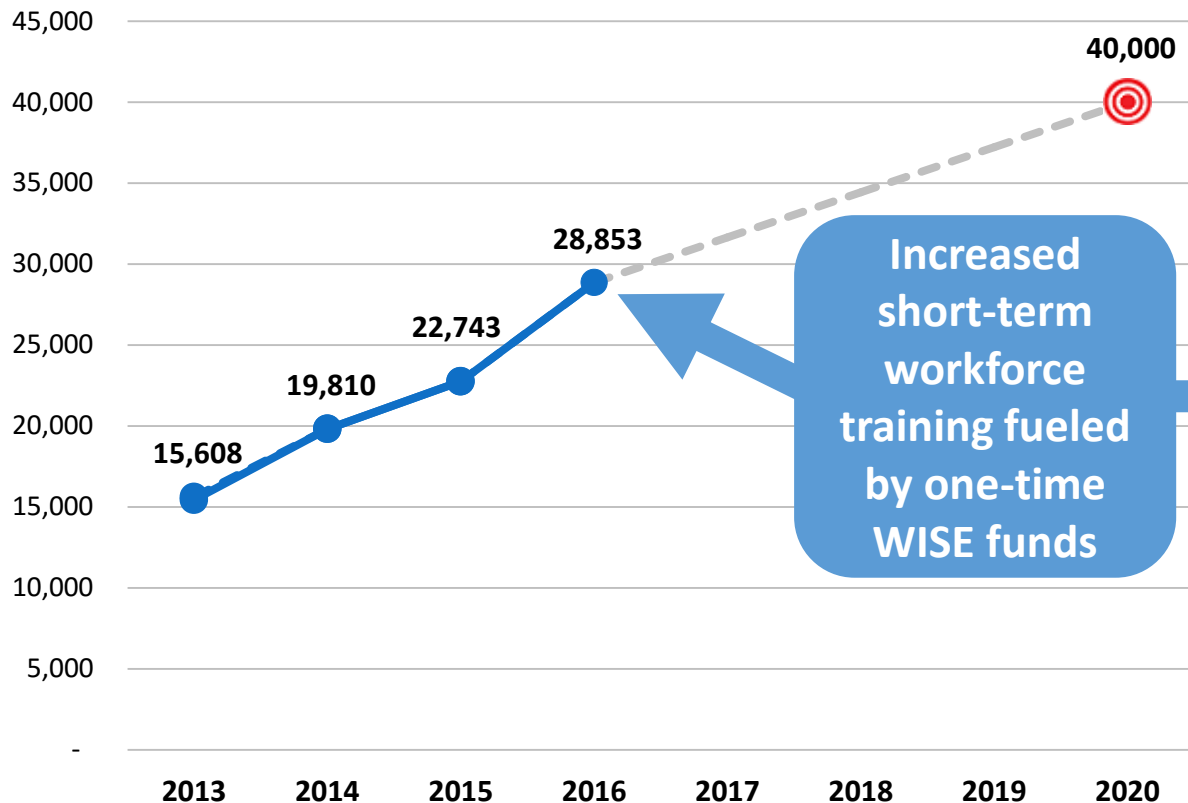
Source: LWC Long-term Occupational Forecast

# LCTCS OPERATING BUDGET BY SOURCE



\* The tuition revenue amount is a projection of actual revenues that will be collected instead of appropriated budget authority

# LARGEST GRADUATING CLASS IN LCTCS HISTORY.....AGAIN

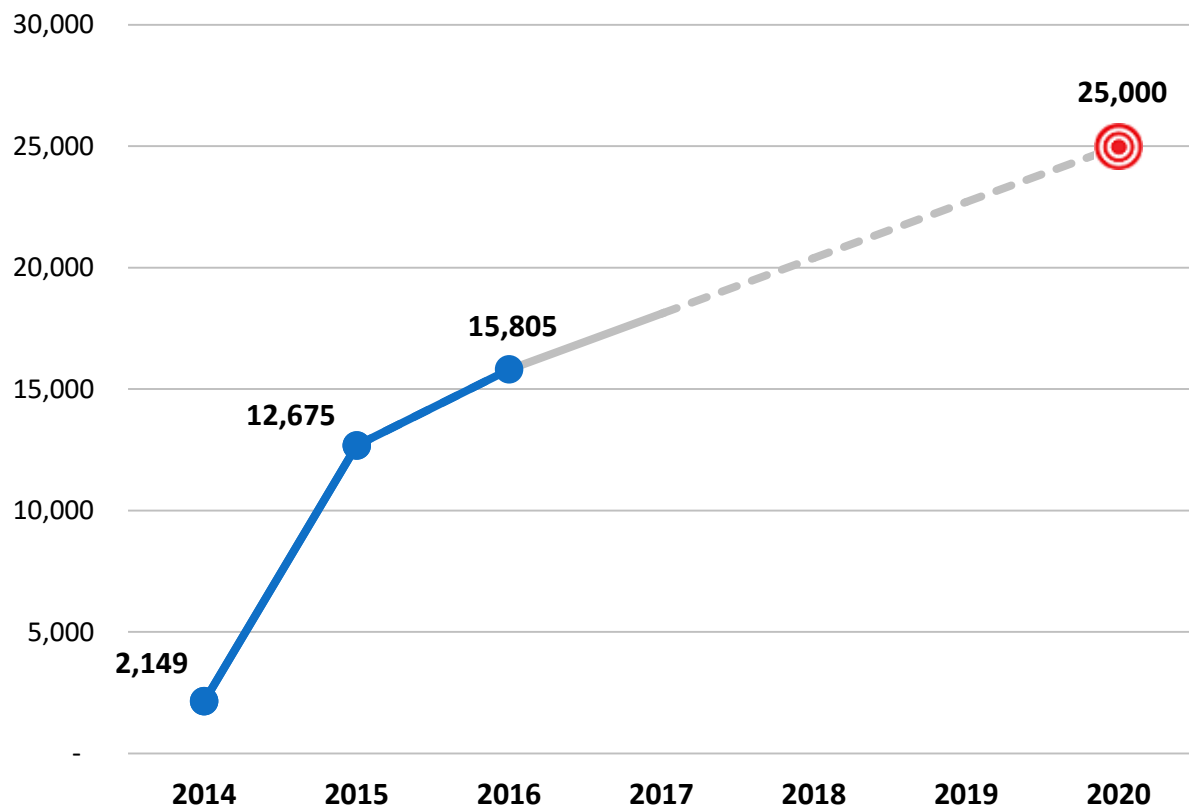


## Quick Facts

- 80% of graduates in high-wage, high-demand fields
- 18,626 credit graduates
- **10,502 Industry Based Certifications (IBCs)**



# TRANSFERRING MORE STUDENTS THAN EVER

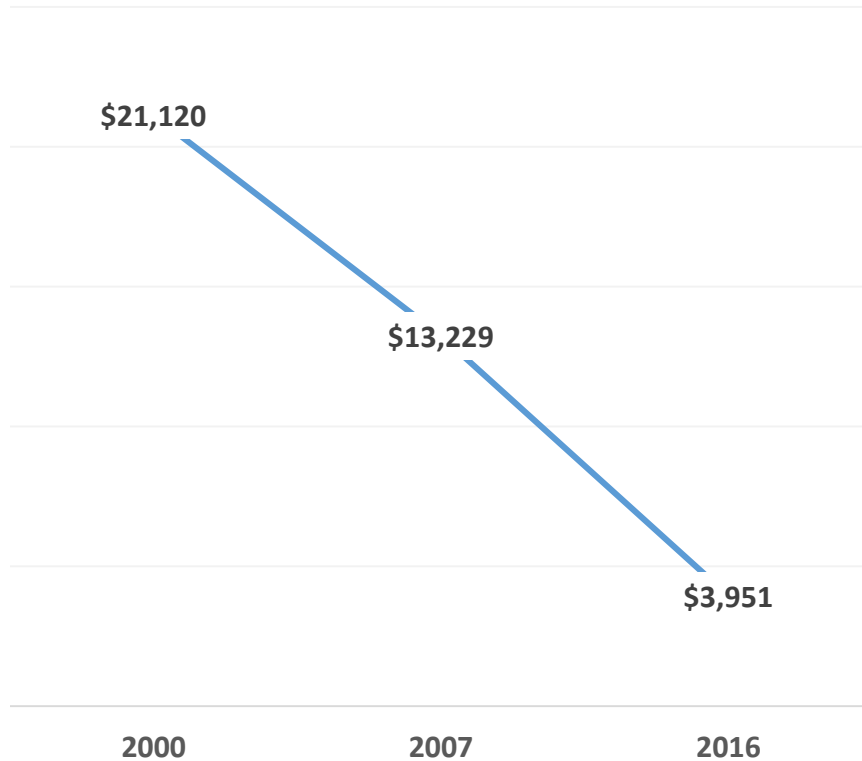


## Quick Facts

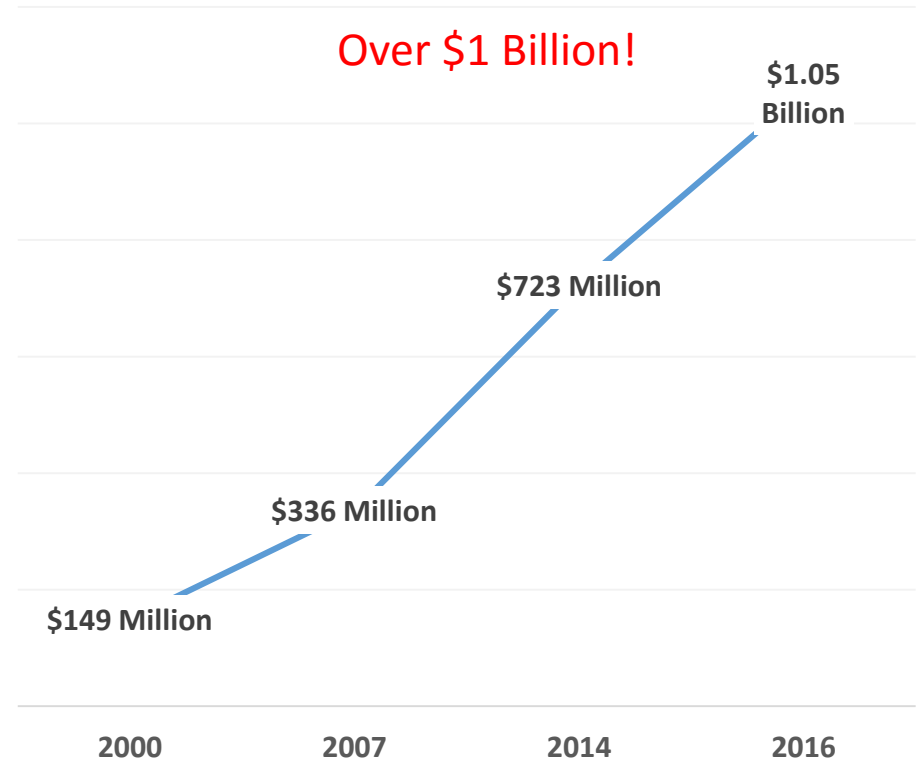
- 14% transferred out of state
- 86% transferred in state
- 2,170 transferred to SLU
- 1,843 transferred to ULL
- 1,708 transferred to LSU
- 994 transferred to Nicholls
- 917 transferred to NSU
- 472 transferred to SU

# RETURNING LOUISIANA'S INVESTMENT

State Funding  
Per LCTCS Graduate



Louisiana Salary Earnings From  
New LCTCS Graduates



# EFFICIENCIES UNDERTAKEN

## Before Cuts



- 7 - Community Colleges
- 2 - Technical Community Colleges
- 42 - Technical Colleges

## Now



- 7 - Community Colleges
- 4 - Technical Community Colleges
- 2 - Technical Colleges

## Enterprise Services:

- Admissions
- Financial Aid
- Records
- Payroll
- Computer Services
- Auditing
- Facility Management
- E-Learning

**\$29 MILLION IN ANNUAL SAVINGS DIRECTED BACK TO THE CLASSROOM**

# ONGOING EFFICIENCY EFFORTS

- Fiscal Health Monitoring
- Program Health Review
- Enterprise Services



# APPRENTICESHIP

- Associate's degrees in electrical instrumentation, millwright, and process technology
- 3 years on-the-job experience
- Tuition funded by Dow and a competitive salary

“We could not do this without the great public-private partnership between Dow and LCTCS”

**Eduardo Do Val, Louisiana Operations Site Director**

“This is about more than just filling jobs. It is about offering individuals the training and experience they need to establish attractive, long-term careers that will position them for future success.”

**Johnny Chavez, St. Charles Operations Site Director**

# STUDENT SUCCESS STORY



**College:** Bossier Parish Community College

**Student Name:** Cosmas Ikenna Mbadugha

**Student's Background:** Cosmas graduated from the Engineering program at Bossier Parish Community College 2014.

**Credential Earned:** Associate of Science in Engineering Degree

**Outcome:** Transferred to ULL, earned BS degree in Chemical Engineering 2016. Recently employed as an Engineer at Johnson Controls, he will earn nearly six figures.

**Johnson  
Controls**



# STUDENT SUCCESS STORY

**College:** NW Louisiana Technical College



**Student Name:** Brooke Blackmon

**Student's Background:** Started at a four-year university, an accident caused her to stop attending. After 2 years rehabbing her injuries, she enrolled at NWLTC.

**Credential Earned:** Pursuing Technical Diploma in Welding scheduled to graduate Dec. 2016.

**Outcome:** Due to the demand for welders in NW Louisiana, C&H Precision Machining offered Brooke a position as precision welder contingent that she complete the program.



# STUDENT SUCCESS STORY



**College:** Central Louisiana Technical Community College

**Student Name:** Sgt. Charles Allen

**Student's Background:** A 14-year U.S. Army veteran. Applied to the new Cheniere Craft Development Program. Partnership between Cheniere Energy, Bechtel Corp., Fort Polk, and CLTCC, prepares soldiers near the end of their military service for a civilian career in Specialized Welding.



**Credential Earned:** Certificate of Technical Studies in Welding and an Industry Based Certification in Construction Welding

**Outcome:** Sgt. Allen successfully completed the program and is employed full-time with Bechtel.



# STUDENT SUCCESS STORY



**College:** Nunez Community College

**Student Name:** M. Liam Doran

**Student's Background:** Spent 20 years cooking and managing restaurants and hotel kitchens as a chef in New Orleans. Decided to make a career change.

**Credential Earned:** Associate of Applied Science in Industrial Technology (PTEC)

**Outcome:** After starting his community college education at age 40, Liam is employed full-time as an operator at Phillips 66 Alliance Refinery in Belle Chasse, LA.



# RECOMMENDATIONS

- Continue movement toward funding performance
- Flexibility to expand enterprise operations
- Establish a policy framework to promote students earning college credit through dual enrollment
- Recognition of the broad mission of community and technical colleges