

GRAD ACT - Area 5
Southern University at Baton Rouge

5-a. Number of Students by Classification - Fall 2009

Institution	Fall 2009 Headcount		Total	Annual Full-time Equivalent (FTE) ¹		
	Undergraduate	Graduate		Undergraduate	Graduate	Total
Southern University at Baton Rouge	6484	1135	7619	6094.9	686.0	6780.9

Sources: Information Systems Division; LA Board of Regents Statewide Student Profile System (SPSCHFTE)

Note: ¹FTE data are revised and unofficial. Corrected submission of related SCH data profiles have been submitted to the Board of Regents but not yet posted to the website.

5-b. Number of Instructional Staff Fall 2009

Institution	Instructional Faculty Headcount	Instructional Faculty FTE
Southern University at Baton Rouge	451	389.9

Source: Office of Human Resources

5-c. Average Class Student-to-Instructor Ratio

Institution	Fall 2009
Southern University at Baton Rouge	23.9

Source: Information Systems Division

5-e. Number of Non Instructional Staff Fall 2009

Divisional Units	Total Non-Instructional Staff	Non-Instructional Staff FTE
Agricultural Family & Consumer Sciences	8.5	8.5
Arts and Humanities	8	8
Business	4	4
Education	4	4
Engineering	9	9
Sciences	30	30
Graduate Studies & Research	1	1
Architecture	5	5
Nursing	2	2
Public Policy & Urban Affairs	4	4
TOTAL	75.5	75.5

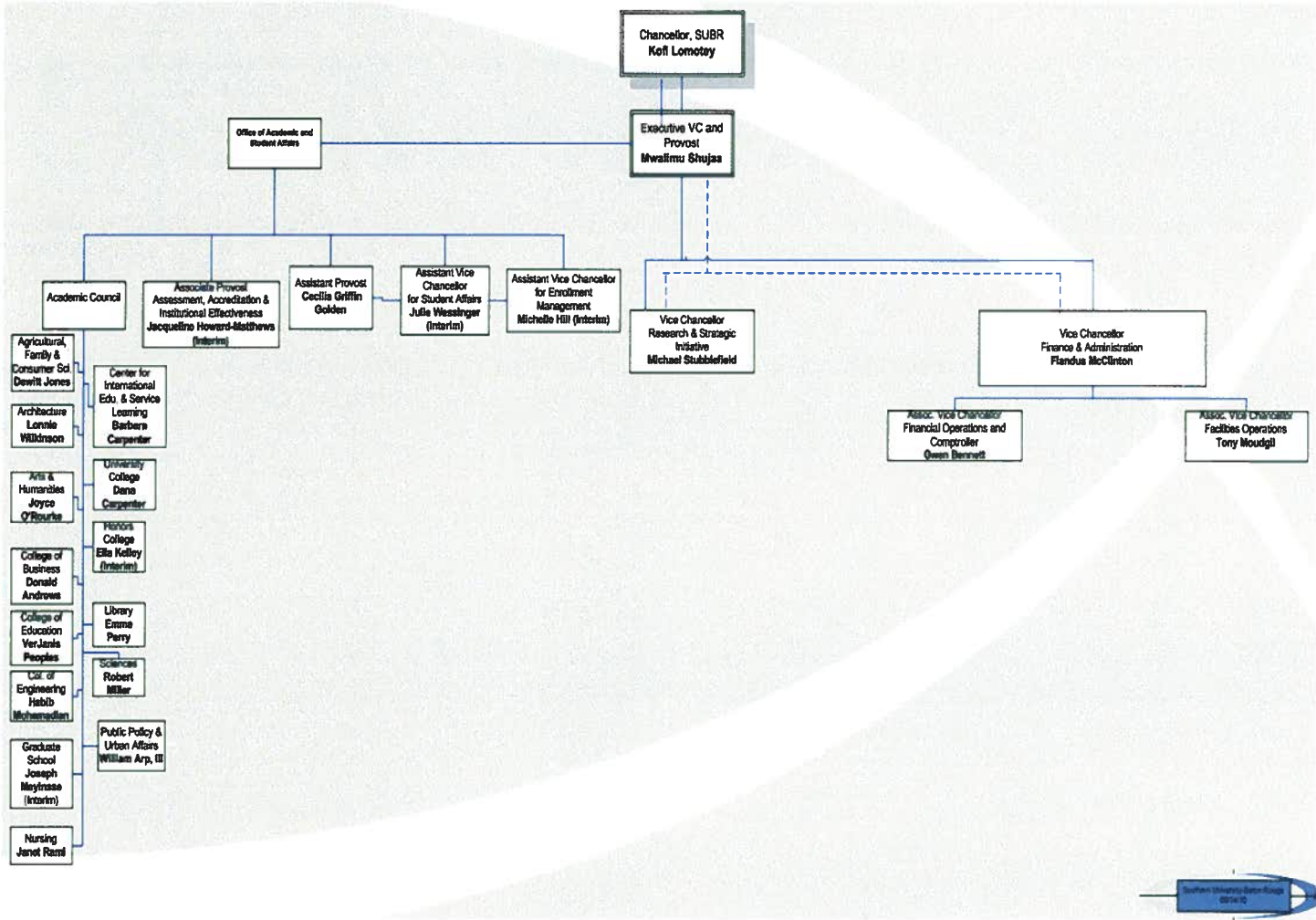
Source: Academic Departments

5-f. Number of Administrative Staff Fall 2009

Divisional Units	Total Administrative Staff	Administrative Staff FTE
Chancellor	1	1
Academic and Student Affairs	19	19
Finance and Administration	3	3
Research and Strategic Initiative	1	1
TOTAL	24	24

Source: Office of Human Resources

Area 5g: Organizational Chart, SUBR



5-h. Salaries of Personnel (First and Second Tier of SUBR Personnel in Leadership Positions) (REVISED to reflect annual furlough hours)

POSITIONS	Total Base Salary (\$)		Salary Changes
	FY 2008-09	FY 2009-10 (Adjusted)	
Chancellor	245,000	235,577	Annual salary reduction is due to 10 Furlough Days/80 Hours
Executive Vice Chancellor/Provost	175,000	168,269	Annual salary reduction is due to 10 Furlough Days/80 Hours
Associate Provost	110,000	105,769	Annual salary reduction is due to 10 Furlough Days/80 Hours
Assistant Provost	90,000	86,538	Annual salary reduction is due to 10 Furlough Days/80 Hours
Assistant Vice Chancellor, Student Affairs (Interim)	80,000	76,923	Annual salary reduction is due to 10 Furlough Days/80 Hours
Associate Vice Chancellor, Enrollment Management	99,350	86,538	Enrollment Management was dismantled in August 2008. Prior to that, the salary for the Vice Chancellor for Enrollment Management position was \$99,350. Prior to that, the position was Associate Vice Chancellor for Enrollment Management at \$90,080. The position was re-established in 2010 as Assistant Vice Chancellor for Enrollment Management at \$90,000 due to reorganization and change in personnel. 2009-10 annual salary is \$86,538 due to annual reduction of 10 furlough days/80 work hours.
Dean, College of Business	112,746	108,410	Annual salary reduction is due to 10 Furlough Days/80 Hours
Dean, School of Public Policy and Urban Affairs	89,050	85,625	Annual salary reduction is due to 10 Furlough Days/80 Hours
Dean, Center for International Education and Continuing Education	89,000	85,577	Annual salary reduction is due to 10 Furlough Days/80 Hours
Dean, University College	90,808	87,315	Annual salary reduction is due to 10 Furlough Days/80 Hours
Dean, College of Agriculture	96,576	92,862	Annual salary reduction is due to 10 Furlough Days/80 Hours
Dean, Honors College (Interim)	89,050	85,625	Annual salary reduction is due to 10 Furlough Days/80 Hours
Dean, College of Sciences	102,020	98,096	Annual salary reduction is due to 10 Furlough Days/80 Hours
Dean, College of Engineering	127,398	122,498	Annual salary reduction is due to 10 Furlough Days/80 Hours
Dean, College of Arts and Humanities	89,050	85,625	Annual salary reduction is due to 10 Furlough Days/80 Hours
Dean, Library	88,472	85,069	Annual salary reduction is due to 10 Furlough Days/80 Hours
Dean, College of Education	100,130	96,279	Annual salary reduction is due to 10 Furlough Days/80 Hours
Dean, School of Nursing	120,582	115,944	Annual salary reduction is due to 10 Furlough Days/80 Hours
Dean, School of Architecture	97,500	93,750	Annual salary reduction is due to 10 Furlough Days/80 Hours
Dean, Graduate School	89,050	85,625	Annual salary reduction is due to 10 Furlough Days/80 Hours
Vice Chancellor, Finance & Administration	104,706	122,455	Salary increased to \$127,353 in 2010 due to additional duties and responsibilities. 2009-10 annual salary reduction is due to 10 Furlough Days/80 Hours.
Associate Vice Chancellor and Comptroller	89,050	85,625	Annual salary reduction is due to 10 Furlough Days/80 Hours
Associate Vice Chancellor, Facilities Operations	69,635	67,894	Annual salary reduction is due to 6.5 Furlough Days/52 Hours
Vice Chancellor, Research and Strategic Initiative	117,500	112,981	Annual salary reduction is due to 10 Furlough Days/80 Hours

Source: SUBR Office of Human Resources; SUBR Budget Office

NOTE: The Southern University Board of Supervisors approved the 2009-10 Budget Reduction Plan effective September 1, 2009. The plan involves two categories: Category 1: Include employees earning \$30,000 but less than \$75,000 that were furloughed without pay for 6.5 days or a total of 52 hours during the period September 1, 2009 through June 30, 2010. Category 2: Include employees earning \$75,000 and above that were furloughed without pay for 10 days for a total of 80 hours during the same period as Category 1. Each category was assigned a schedule of unpaid furlough days/hours.