

Organizational Data

**Submitted to
The Louisiana Board of Regents
In Partial fulfillment of the requirements of Act 741
Louisiana GRAD Act**

**River Parishes Community College
Louisiana Community and Technical College System**

April 2011

a. Number of students by classification

- **Headcount, undergraduate students and graduate/professional school students**

Undergraduate headcount	2,151
-------------------------	-------

- **Annual FTE (full-time equivalent) undergraduate and graduate/professional school students**

Undergraduate FTE	1,372
-------------------	-------

b. Number of instructional staff members

- **Number and FTE instructional faculty**

Total Headcount Faculty	94
FTE Faculty	55

- c. **Average class student-to-instructor ratio**
- **Average undergraduate class size at the institution**

Average undergraduate class size	15
----------------------------------	----

d. Average number of students per instructor

- **Ratio of FTE students to FTE instructional faculty**

Average number of students per instructor	25
---	----

- e. **Number of non-instructional staff members in academic colleges and departments**
- **Number and FTE non-instructional staff members by academic college (or school, if that is the highest level of academic organization for some units)**

Number of non-instructional staff	FTE non-instructional staff
10	10

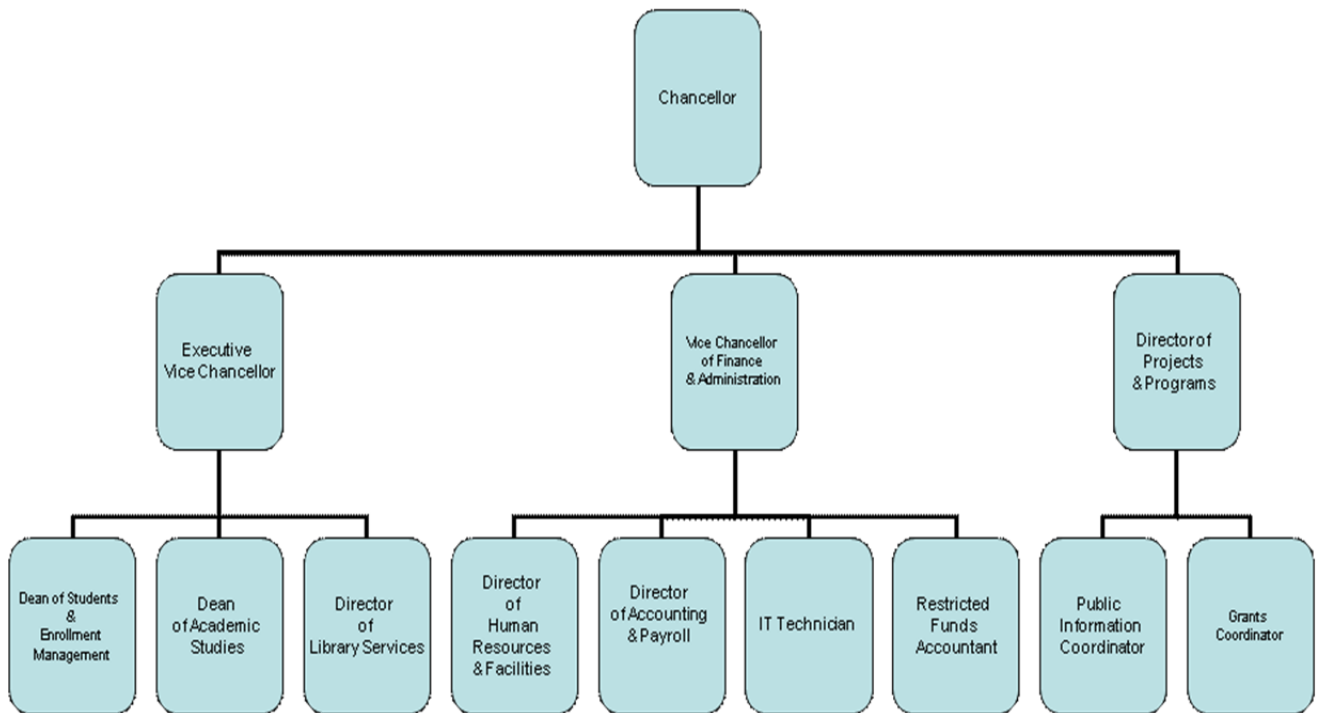
f. Number and FTE of staff in administrative areas

- **Number and FTE of staff as reported in areas other than the academic colleges/schools, reported by division**

Number of staff	FTE staff
3	3

- g. Organization chart containing all departments and personnel in the institution down to the second level of the organization below the president, chancellor, or equivalent position (as of Fall 2010)

River Parishes Community College – Organizational Chart 2010



h. Salaries of all personnel identified in subparagraph (g) above and the date, amount, and type of all increases in salary received since June 30, 2008

- A chart listing the title, fall 2009 Total Base Salary, and a history of any salary changes (within the same position) since June 30, 2008.

River Parishes Community College Grad Act - Section H		
Position Title	Total Base Salary Fall 2010	History of Salary Changes Since 6/30/2009
Chancellor	\$144,144	\$0
Executive Vice Chancellor	\$117,192	\$0
Vice Chancellor of Finance & Administration	\$86,920	\$0
Director of Projects/Programs	\$60,000	\$0
Dean of Students & Enrollment Management	\$68,660	\$0
Dean of Academic Studies	\$71,687	\$0
Director of Library Services	\$52,896	\$0
Director of Human Resources	\$58,000	\$0
Director of Accounting & Payroll	\$52,000	\$0
IT Technician	\$38,160	\$0
Restricted Funds Accountant	\$46,750	\$0
Media Relations Coordinator	\$38,000	\$0
Grants Coordinator	\$40,000	\$0