

# **Organizational Data**

## **Section 5**

**Submitted to  
The Louisiana Board of Regents  
In Partial Fulfillment of the Requirements of Act 741  
Louisiana GRAD Act  
Northwest Louisiana Technical College  
Spring 2011**

**a. Number of students by classification**

- **Headcount, undergraduate students and graduate/professional school students**

Undergraduate headcount	3037
-------------------------	------

- **Annual FTE (full-time equivalent) undergraduate and graduate/professional school students**

Undergraduate FTE	2420
-------------------	------

**b. Number of instructional staff members**

- **Number and FTE instructional faculty**

Total Headcount Faculty	140
FTE Faculty	102

- c. **Average class student-to-instructor ratio**
- **Average undergraduate class size at the institution**

Average undergraduate class size	8
----------------------------------	---

**d. Average number of students per instructor**

- **Ratio of FTE students to FTE instructional faculty**

Average number of students per instructor	24
---	----

- e. **Number of non-instructional staff members in academic colleges and departments**
- **Number and FTE non-instructional staff members by academic college (or school, if that is the highest level of academic organization for some units)**

Number of non-instructional staff	FTE non-instructional staff
10	10

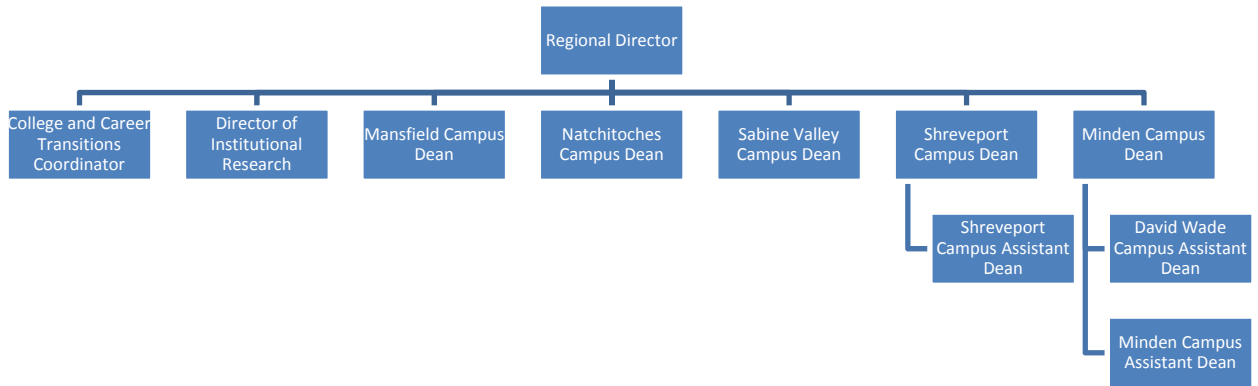
**Employee Category = "1"**

**f. Number and FTE of staff in administrative areas**

- **Number and FTE of staff as reported in areas other than the academic colleges/schools, reported by division**

Number of staff	FTE staff
10	10

- g. Organization chart containing all departments and personnel in the institution down to the second level of the organization below the president, chancellor, or equivalent position (as of Fall 2010)





**h. Salaries of all personnel identified in subparagraph (g) above and the date, amount, and type of all increases in salary received since June 30, 2008**

- **A chart listing the title, fall 2010 Total Base Salary, and a history of any salary changes (within the same position) since June 30, 2008.**

<b>Position</b>	<b>Total Base Salary, Fall 2010</b>	<b>Salary Changes Since 6/30/2008</b>
Regional Director/Minden Campus Dean	\$101,611.90	0
Mansfield Campus Dean	\$71,818.24	0
Natchitoches Campus Dean	\$77,733.76	(\$7,886.06)*
Sabine Valley Campus Dean	\$69,500.08	0
Shreveport Campus Dean	\$65,597.15	0
Director of Institutional Research	\$59,615.36	0
College and Career Transitions Coordinator	\$57,199.88	0
Shreveport Campus Assistant Dean	\$63,904.88	(\$12,999.85)*
Minden Campus Assistant Dean	\$60,556.62	0
David Wade Campus Assistant Dean	\$51,870.02	0

\*Salary Reduction