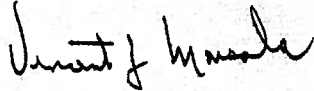


Louisiana State University Shreveport

Year 1 GRAD Act Annual Report (2010-2011)

Submitted April 1, 2011

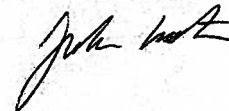
Dr. Vincent J. Marsala
Chancellor



Dr. Paul Sisson
Provost and VC Academic Affairs



Ms. Julie Lessiter
Assoc. VC Academic Services



Performance Objective: (5) Organizational Data
 Element: a. Number of students by classification.

	UG	GRAD	Total	Source
a. Number of students by classification (Headcount) Fall '09	4,189	446	4,635	BOR Report FPENRLRPT
a. Number of students by classification (Headcount) Fall '10	4,058	446	4,504	BOR Report FPENRLRPT
	UG	G	Total	
a. Number of students by classification (FTE) 2009-10	3,167.8	279.3	3,447.1	BOR report SCHBRCRPT
a. Number of students by classification (FTE) 2010-11	3,113.5	281.1	3,394.6	BOR report SCHBRCRPT

Performance Objective: (5) Organizational Data
Element: b. Number of instructional staff members.

	Headcount	FTE	Source
b. Number of instructional staff members - Fall 2009	190	151.7	BOR info
b. Number of instructional staff members - Fall 2010	193	148.5	

Performance Objective: (5) Organizational Data
Element: c. Average class student-to-instructor ratio.

	Fall 2009	Fall 2010	Source
c. Average class student-to-instructor ratio	23.2	24.9	BOR info

Performance Objective: (5) Organizational Data
Element: d. Average number of students per instructor.

	Fall 2009	Fall 2010	Source
d. Average number of students per instructor	22.7	22.9	BOR info

Performance Objective: (5) Organizational Data
 Element: e. Number of non-instructional staff members in academic colleges and departments.

	Fall 2010	Source
e. Number (headcount) of non-instructional staff members in academic colleges		HR - from EMPSAL file
College of Business, Education, Human Development	19	sent to BOR
College of Arts and Sciences	13	
FTE non-instructional staff members in academic colleges		
College of Business, Education, Human Development	18.3	
College of Arts and Sciences	12.6	

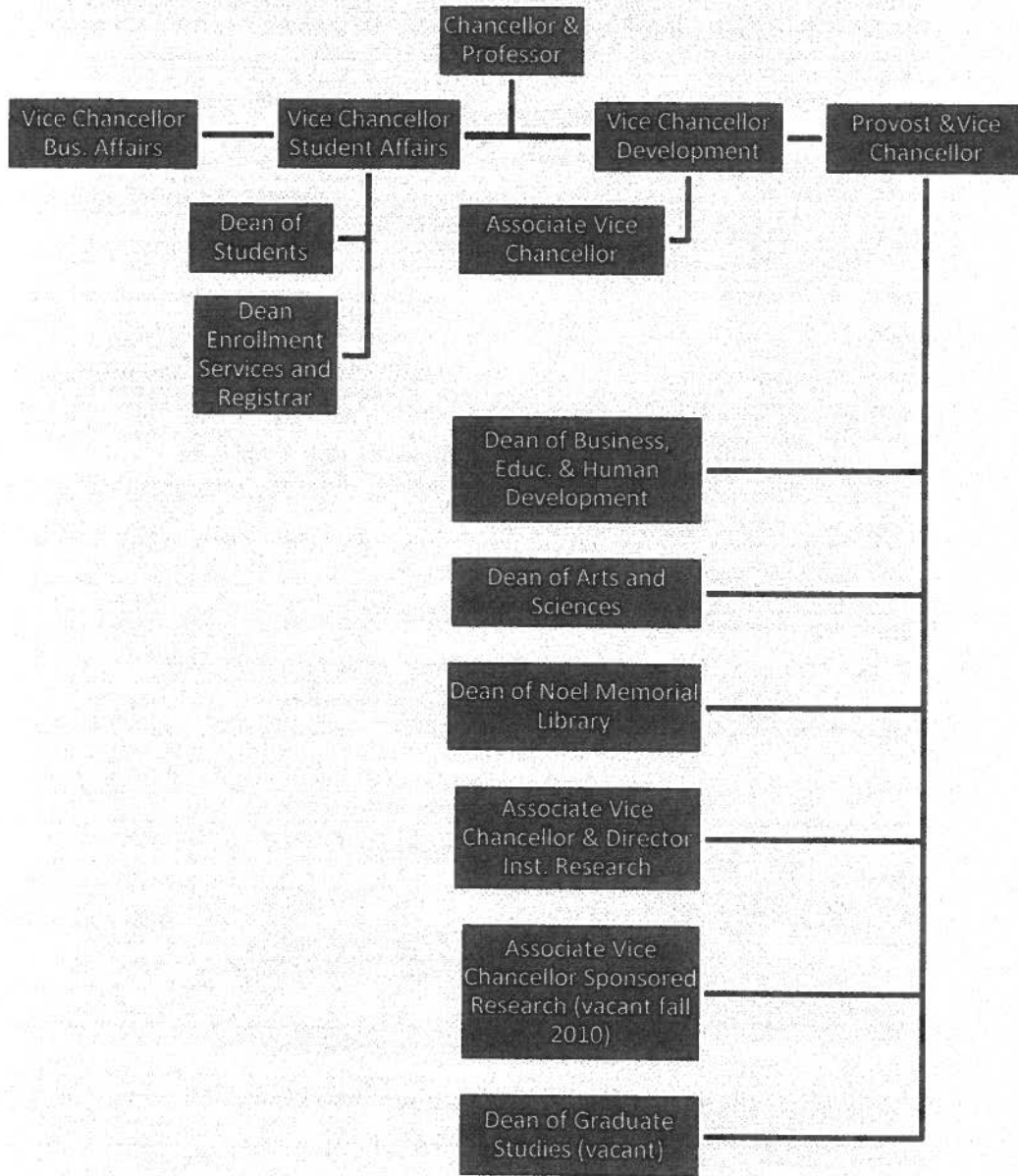
Performance Objective: (5) Organizational Data
Element: f. Number of staff in administrative areas.

	Fall 2010
f. Number (Headcount) of staff in administrative areas	
Executive, Managerial	58
Other	86
FTE number of staff in administrative areas	
Executive, Managerial	58
Other	86

Performance Objective:
Element:

(5) Organizational Data

g. Organization chart containing all departments and personnel in the institution down to the second level of the organization below the president, chancellor, or equivalent position.



Performance Objective: (5) Organizational Data

Element: h. Salaries of all personnel identified in Subparagraph (g) of this Paragraph and the date, amount, and type of all increases in salary received since June 30, 2008.

POSITION	TOTAL BASE SALARY, FALL 2010	SALARY CHANGES SINCE 06/30/2008
Chancellor	\$184,720 salary as of 07/01/2008 \$25,000 housing as of 07/01/2008	\$167,927 salary as of 06/30/2008 \$25,000 housing as of 06/30/2008 \$16,793 merit increase effective 07/01/08. Increase approved from the LSU Board of Supervisors in August 2008.
Interim Provost and Vice Chancellor for Academic Affairs	\$120,000 as of 07/01/2008	\$101,950 as of 06/30/2008 \$18,050 increase effective 07/01/08. Promoted from Dean of College of Sciences to Interim Provost and Vice Chancellor for Academic Affairs.
Provost and Vice Chancellor for Academic Affairs	\$130,000 as of 11/01/2008	\$120,000 as of 07/01/2008 \$10,000 increase effective 11/01/08. Appointment change from "Interim Provost and VC for Academic Affairs" to "Provost and VC for Academic Affairs."
Dean, College of Business, Education and Human Development	\$110,000 as of 08/19/2009	\$96,500 as of 06/30/2008 \$13,500 increase effective 08/19/09. Dean Retired in College of Business. College of Business & College of Education merged. Increase for additional duties.
Dean, College of Arts & Sciences	\$110,000 as of 08/19/2009	\$96,400 as of 06/30/2008 \$13,600 increase effective 08/19/09. Dean in College of Sciences position was vacant. The College of Liberal Arts & College of Sciences merged. Increase for additional duties.
Vice Chancellor, Business Affairs	\$106,300	None
Vice Chancellor, Students Affairs	\$101,650	None
Vice Chancellor, Development	\$80,000	None
Dean of Students	\$83,475	None
Dean, Enrollment Services	\$69,800	None
Associate Vice Chancellor, Development	\$52,500	None
Dean, Noel Library	\$90,000	None
Associate Vice Chancellor, Inst. Research	\$70,000	None

Associate Vice Chancellor, Sponsored Research	Vacant since fall 2010	
Dean of Graduate Studies	Vacant since summer 2009	