

# ACADIANA TECHNICAL COLLEGE

## Section 5



**April 1, 2011**

## Reporting Requirements (5)

a) Number of students by classification

- Headcount, undergraduate students and graduate/professional school students

Undergraduate headcount	4,649
-------------------------	-------

- Annual FTE (full-time equivalent) undergraduate and graduate/professional school students

Undergraduate FTE	3,453
-------------------	-------

- b) Number of instructional staff members
- Number and FTE instructional faculty

Undergraduate headcount	167
FTE Faculty	153

- c) Average class student-to-instructor ratio
- Average undergraduate class size at the institution

Average undergraduate class size at	8.0
-------------------------------------	-----

- d) Average number of students per instructor
- Ratio of FTE students to FTE instructional faculty

Average number of students per instructor	22.6
---	------

- e) Number of non-instructional staff members in academic colleges and departments
- Number and FTE non-instructional staff members by academic college (or school, if that is the highest level of academic organization for some units)

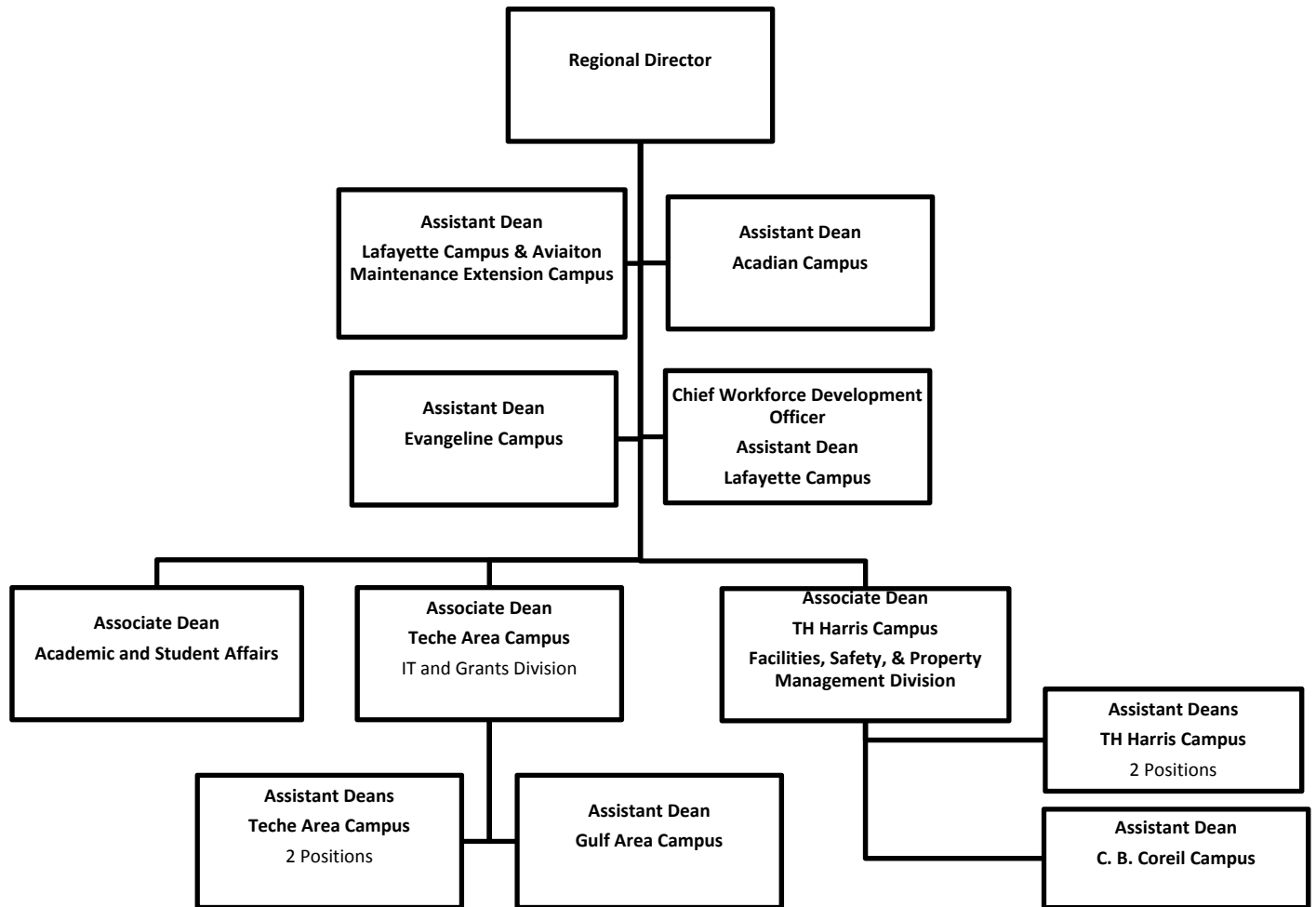
Number of non-instructional staff	FTE non-instructional staff
27	27

- f) Number and FTE of staff in administrative areas
- Number and FTE of staff as reported in areas other than the academic colleges/schools, reported by division

Number of staff	FTE Staff
14	14

- g) Organization chart containing all departments and personnel in the institution down to the second level of the organization below the president, chancellor, or equivalent position (as of Fall 2010)

Acadiana Technical College Fall 2010





h) Salaries of all personnel identified in subparagraph (g) above and the date, amount, and type of all increases in salary received since June 30, 2008

- A chart listing the title, fall 2010 Total Base Salary, and a history of any salary changes (within the same position) since June 30, 2008

Position	TOTAL BASE SALARY, FALL 2009	SALARY CHANGES SINCE 6/30/2008	TOTAL BASE SALARY Fall 2010
Regional Director	\$97,088	6.7% Merit Increase \$90,950	\$97,088
Assistant Dean Lafayette Campus	\$75,080	4% Merit Increase \$72,192	\$75,080
Assistant Dean Acadian Campus	\$67,016	4% Merit Increase \$64,439	\$67,016
Assistant Dean Evangeline Campus	\$75,020	4% Merit Increase \$72,135	\$75,020
Chief Workforce Development Officer/Assistant Dean Lafayette	\$92,505	4% Merit Increase \$88,947	\$92,505
Associate Dean of Academic and Student Affairs	\$65,000	Previous Dean Retired , and new Dean hired at lesser salary of \$86,822	\$65,000
Associate Dean Teche Area	\$79,703	4% Merit Increase \$76,637	\$79,703
Assistant Dean Teche	\$64,428	4% Merit Increase \$61,950	\$64,428
Assistant Dean Teche	\$60,334	4% Merit Increase \$58,013	\$60,334
Associate Dean T.H. Harris	\$72,000	Previous Dean Retired, and new Dean hired at lesser salary (\$72,000) \$76,041 (additional responsibilities of Facilities, Safety, & Property Management, that position was cut after the previous Dean retired)	\$72,000
Assistant Dean T.H. Harris	\$59,979	4% Merit Increase \$57,672	\$59,979
Assistant Dean T.H. Harris	\$60,567	4% Merit Increase \$58,238	\$60,567
Assistant Dean C.B. Coreil	\$53,819	4% Merit Increase \$57,749	\$53,819
Assistant Dean Gulf	\$60,000	No change, hired in October 2008	\$60,000